



PP&J and PW&T Joint Committee Update

Dane County Jail Consolidation

*South Tower Addition & Public Safety
Building Renovation*

November 17, 2020 | DCPW Project #318003

Meeting Agenda

- » Introductions
- » Project Goals
- » Population Forecasts
- » Design Activity
- » Updated Design
- » Space Alternatives
- » Next Steps
- » Questions



Meeting Agenda

- » Introductions
- » Project Goals
- » Population Forecasts
- » Design Activity
- » Updated Design
- » Space Alternatives
- » Next Steps
- » Questions



Project Goals

One Consolidated Facility	✓
Replace outdated cell blocks in CCB, provide a downtown location, replace the Ferris Center, Improve staffing efficiency and reduce operational costs	✓
Appropriate medical/mental health	✓
Visitation at the housing units	✓
More Programming / Multi-purpose space	✓
Minimize impact during construction	✓
Reduce solitary confinement	✓
Reduce total number of beds	✓



One Consolidated Facility

CITY COUNTY BUILDING



VACATE

Area: 81,000 SF

PUBLIC SAFETY BUILDING



RENOVATE

Area: 65,000 SF

HUBER/FERRIS CENTER



VACATE

Area: 29,200 SF

SOUTH TOWER ADDITION



BUILD

Area: 200,000 SF

Replace Outdated Cell Blocks in the CCB



Existing CCB Cell Blocks



Proposed South Tower

Appropriate Medical Spaces



Existing medical housing



Medical intake



Acute Medical Housing Unit

Appropriate Mental Health Spaces



Existing mental health housing



Mental Health Housing Unit

Eliminate / Greatly Reduce Solitary Confinement



Current CCB Cells

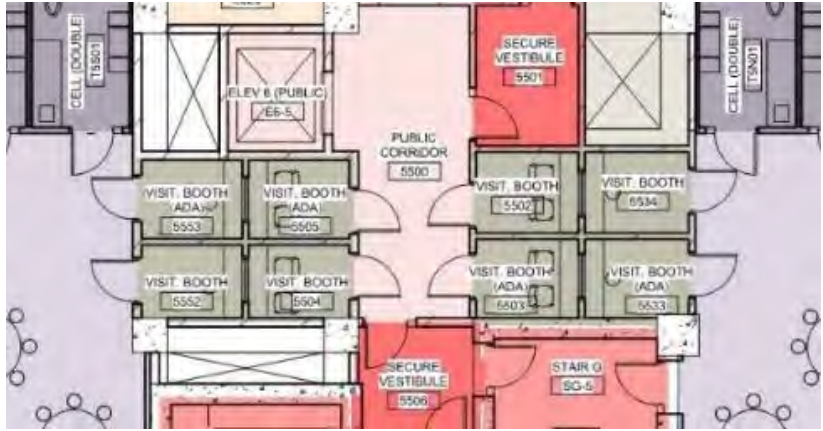


Male Mental Health Housing Unit

Visitation at Housing Units

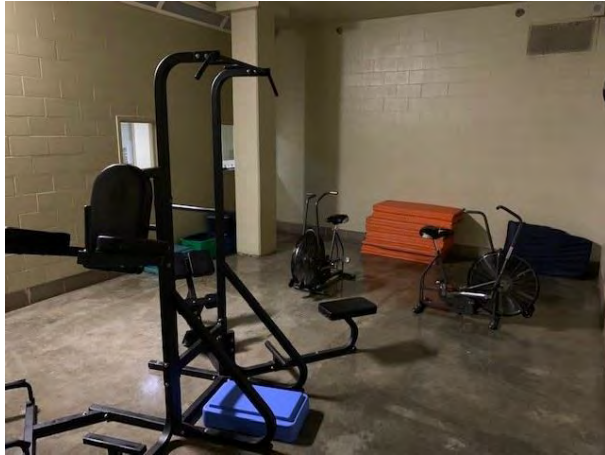


CCB Visitation

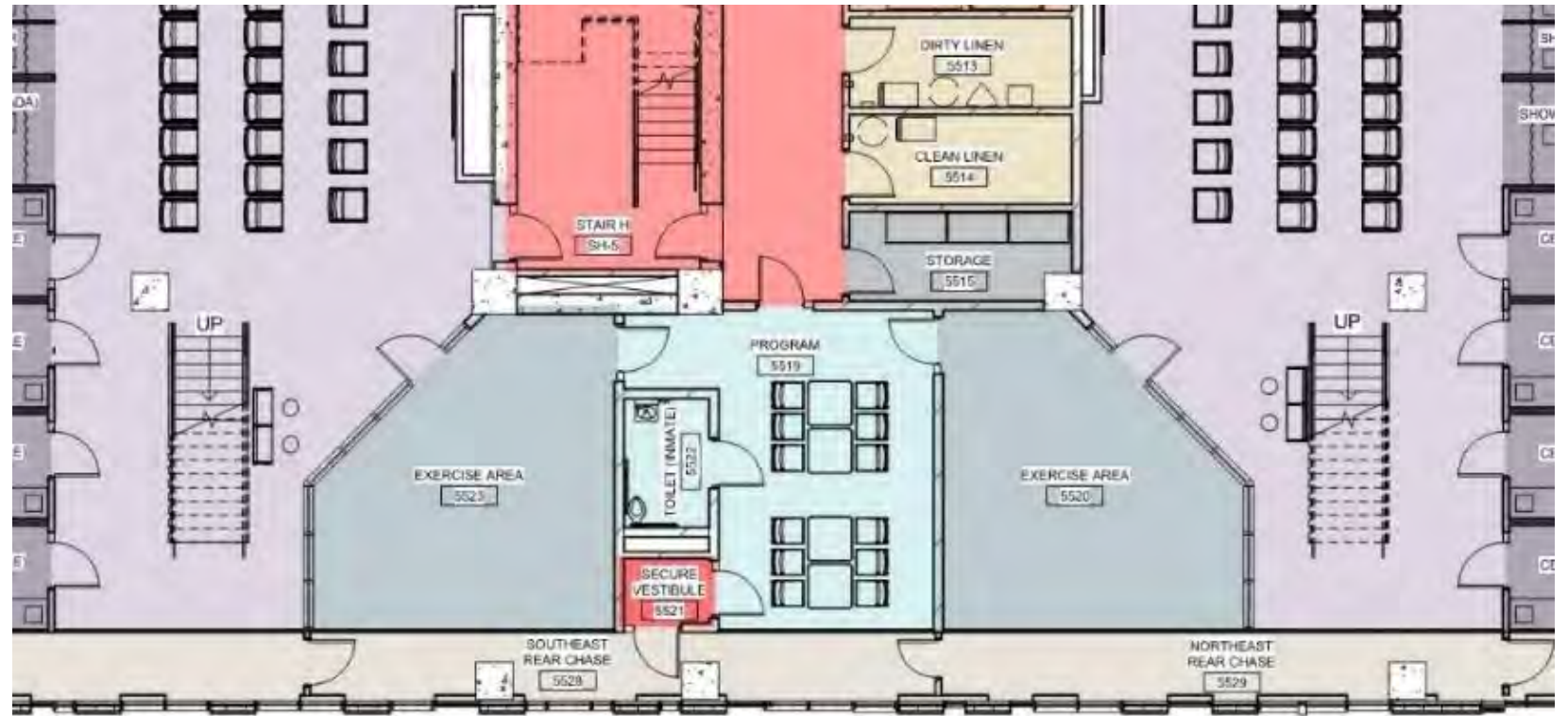


Proposed Visitation in PSB

Provide Multi-Purpose / Program Spaces



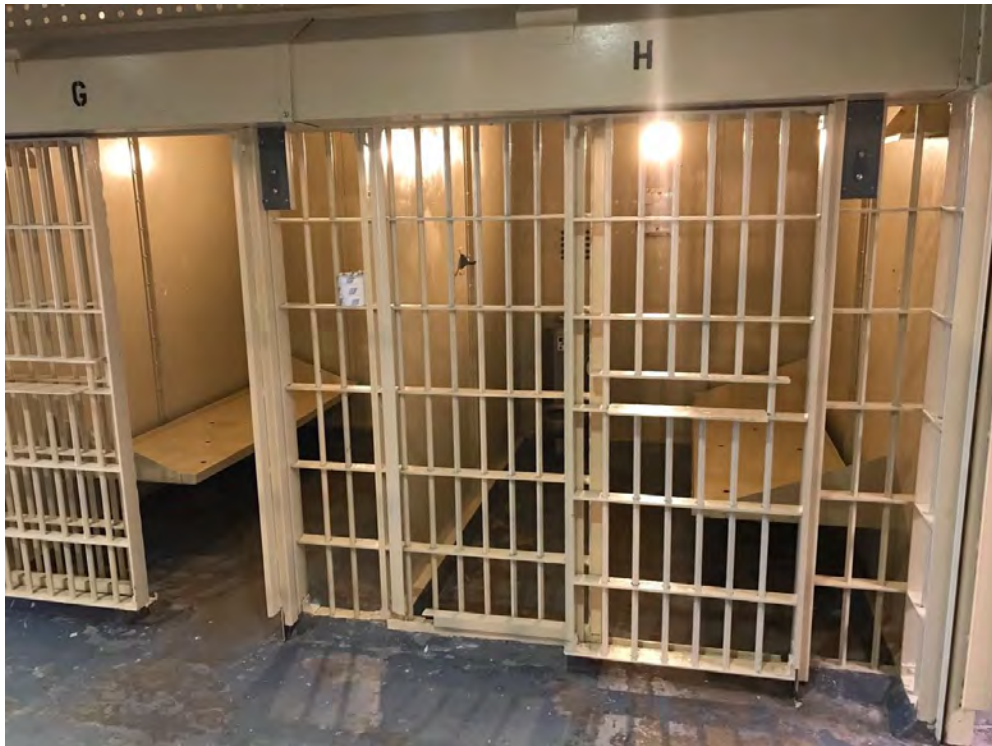
Current CCB indoor recreation



Proposed South Tower Program / Exercise

Reduce Total Number of Beds

- Based on Population, Appropriate Bed Types, and Classification



Meeting Agenda

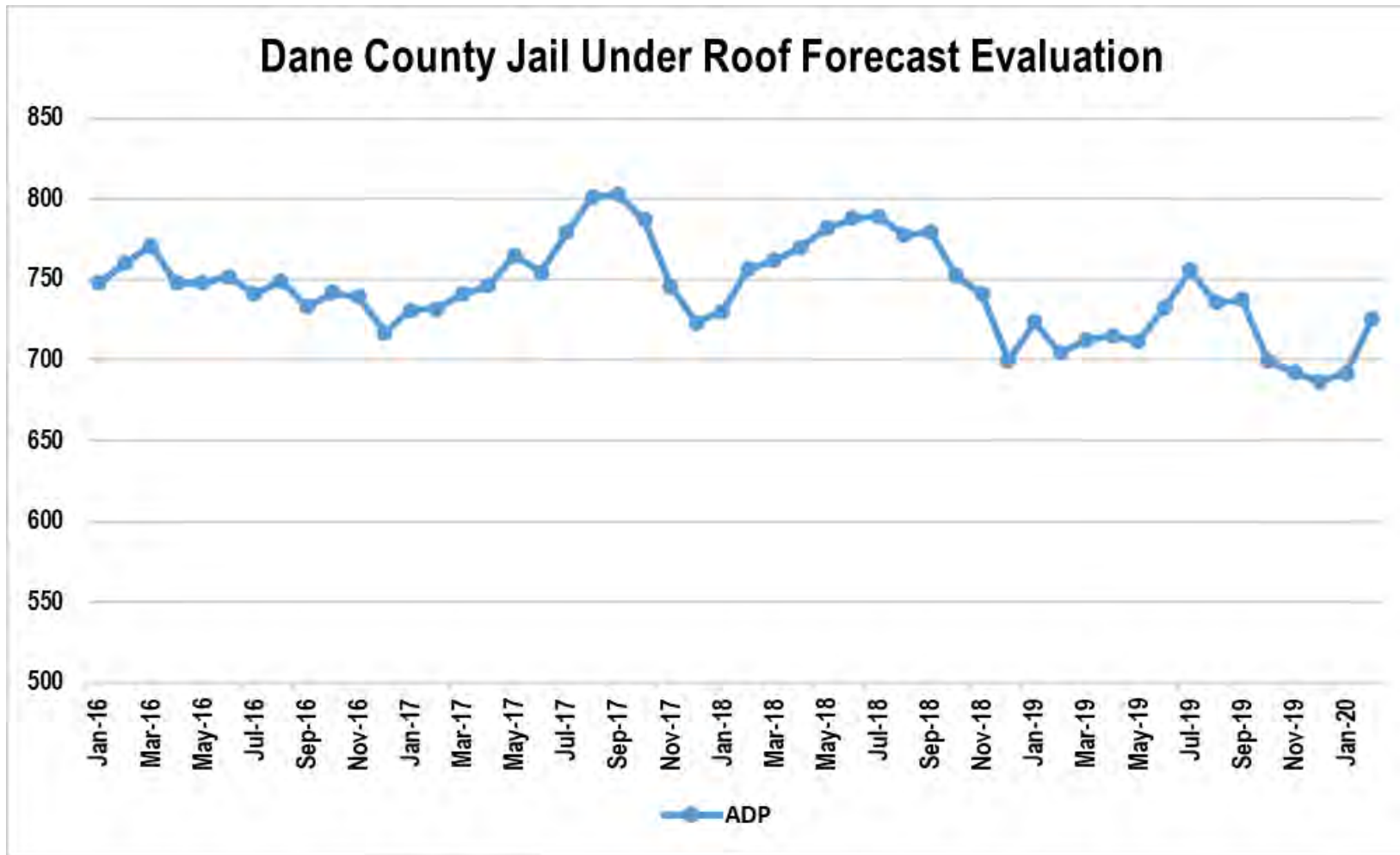
- » Introductions
- » Project Goals
- » Population Forecasts
- » Design Activity
- » Updated Design
- » Space Alternatives
- » Next Steps
- » Questions



Updated Dane County Jail Population Forecast

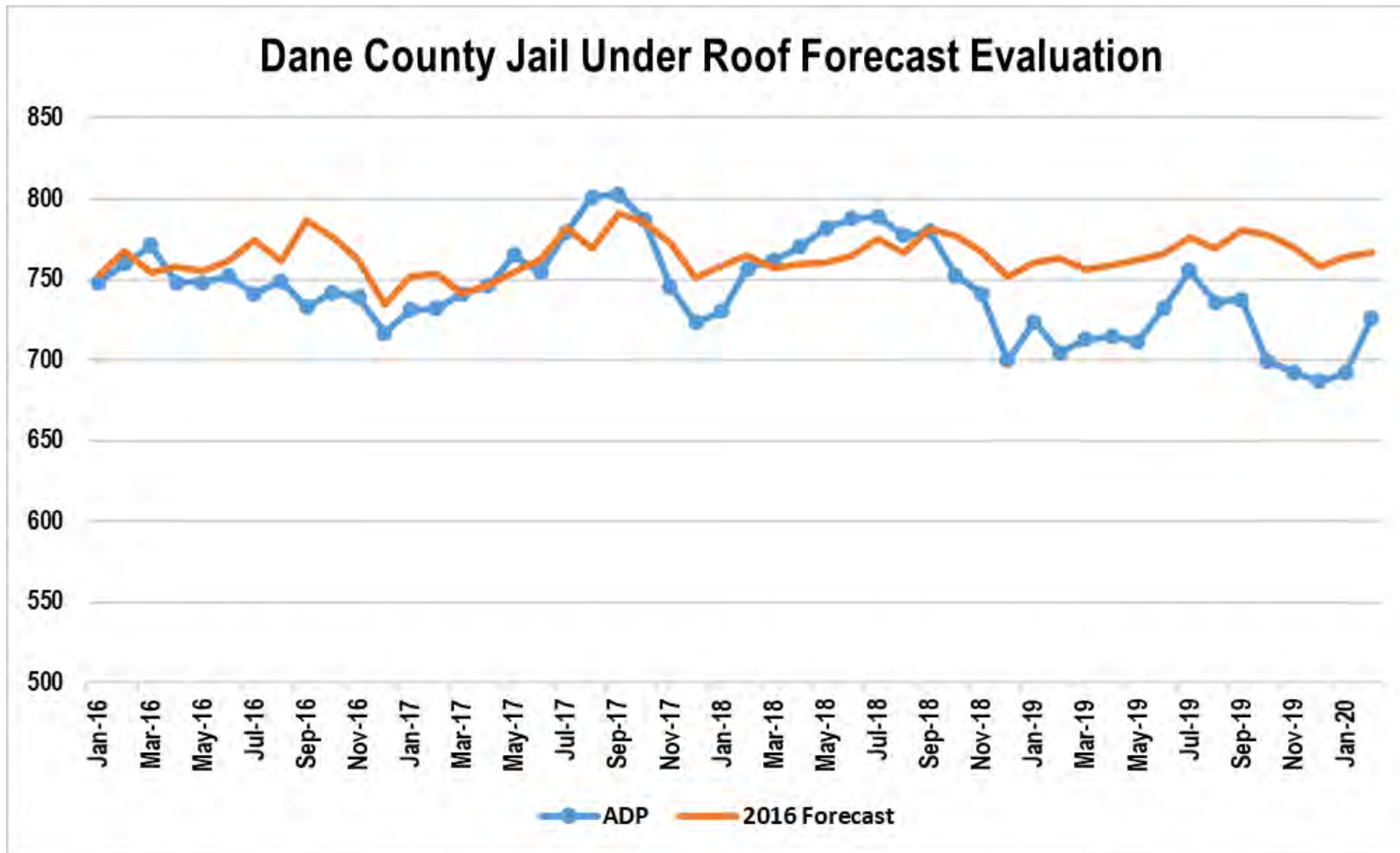
- Review/Evaluate 2016 & 2018 Forecasts
- Update on Population Dynamics
- Evaluation of COVID-19 Impact
- New Forecast Model Results
- Conclusions

2016 & 2018 Population Forecast Evaluation



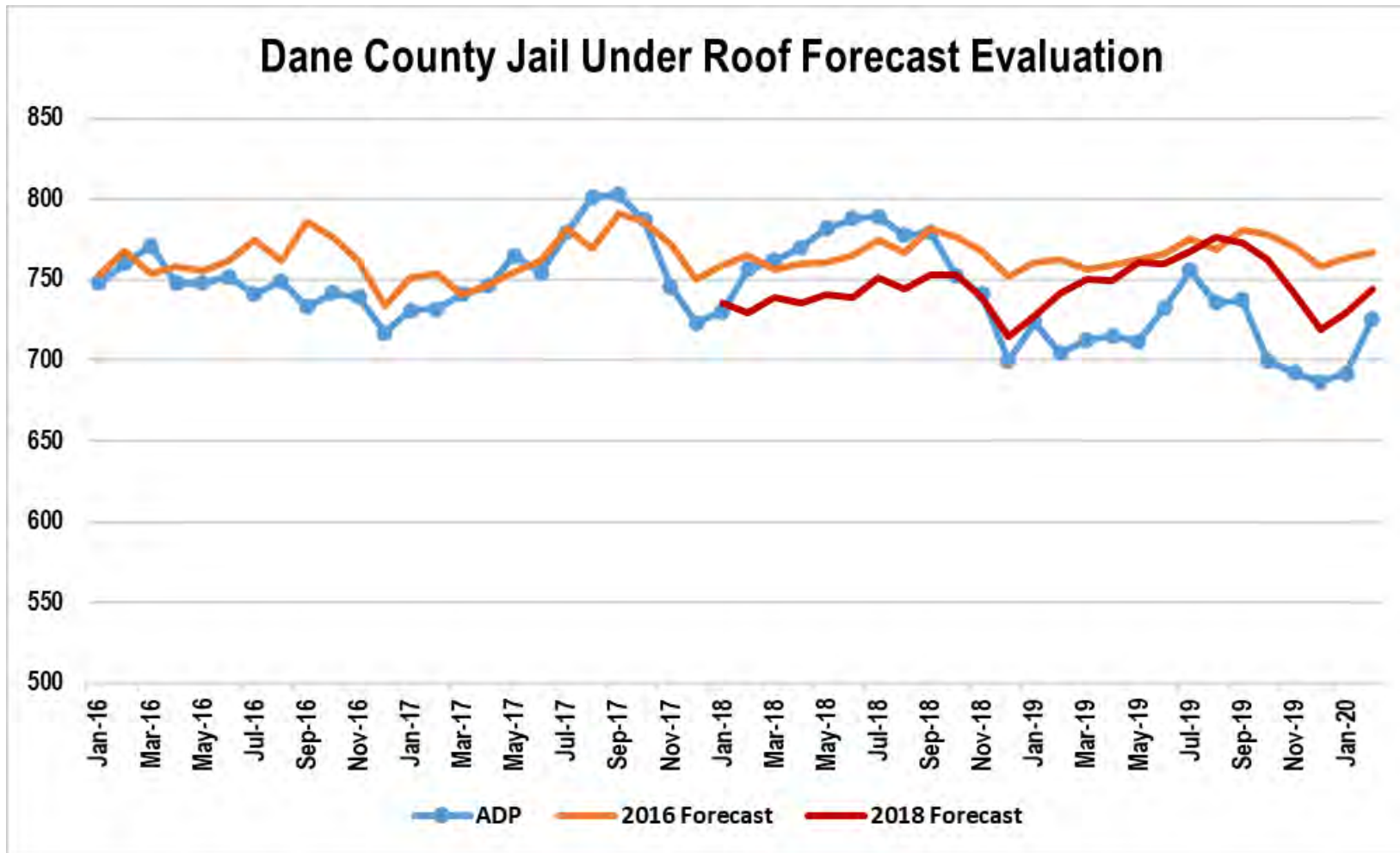
» The Average Daily Population (ADP) of the jail is presented between 2016 & February 2020

2016 & 2018 Population Forecast Evaluation



» 2016 Forecast on average missed actual population by 2.7%

2016 & 2018 Population Forecast Evaluation

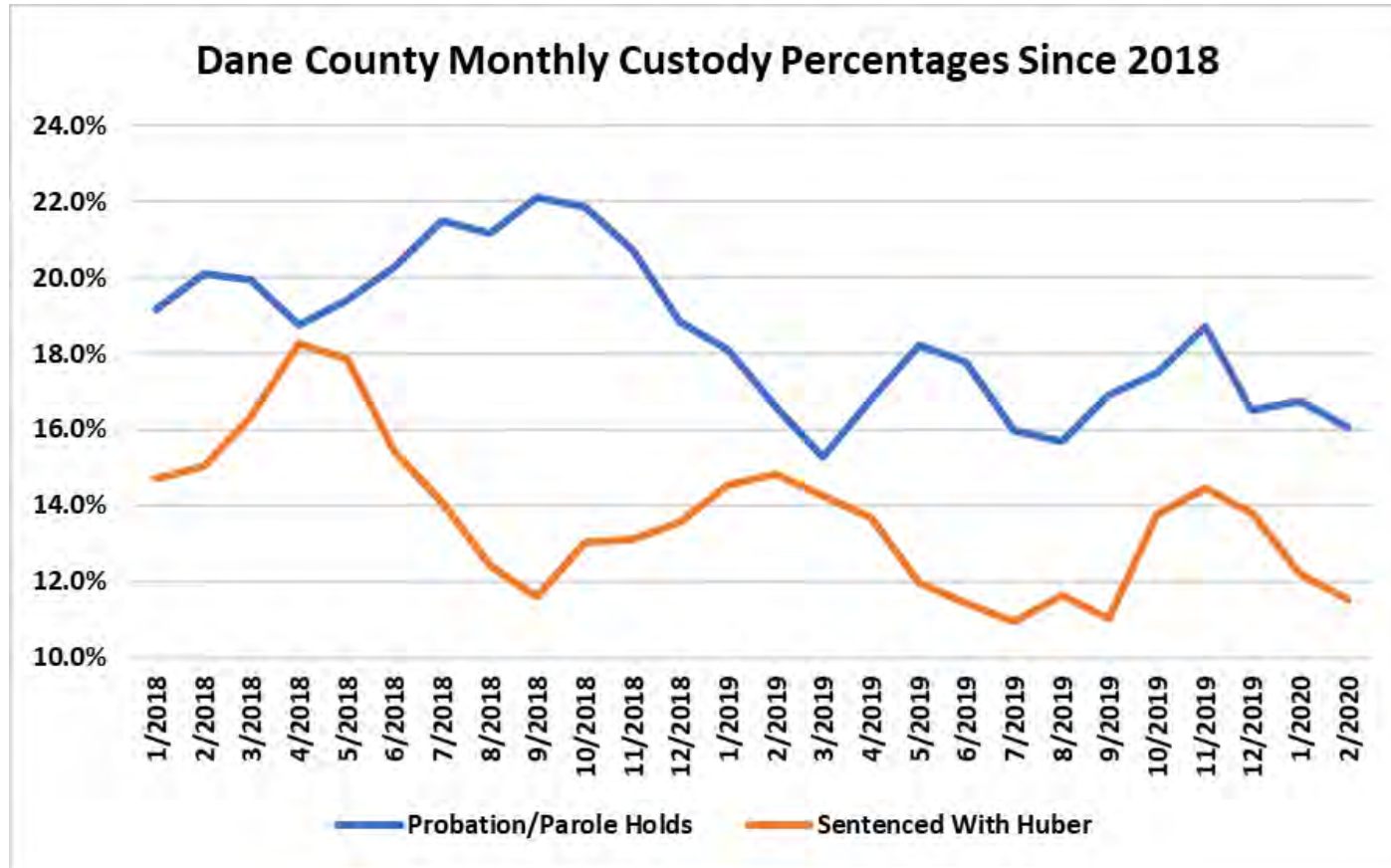


- » 2016 Forecast on average missed actual population by 2.7%
- » 2018 Forecast missed actual population by 3.8% on average monthly basis, but overall missed by 0.4%
- » However, for 2019, it missed by 4.8%

2016 & 2018 Population Forecast Evaluation

- 2 Consistent Themes:
 - All forecasts are only as good as what is known when the forecast was built
 - All jail populations are driven by bookings and average length of stay
- 2019 population decreased by 5.7% to the lowest level in the last decade
- Bookings in 2019 *increased* 6.8%
- Average Length of Stay *decreased* 1% to the lowest level in the data

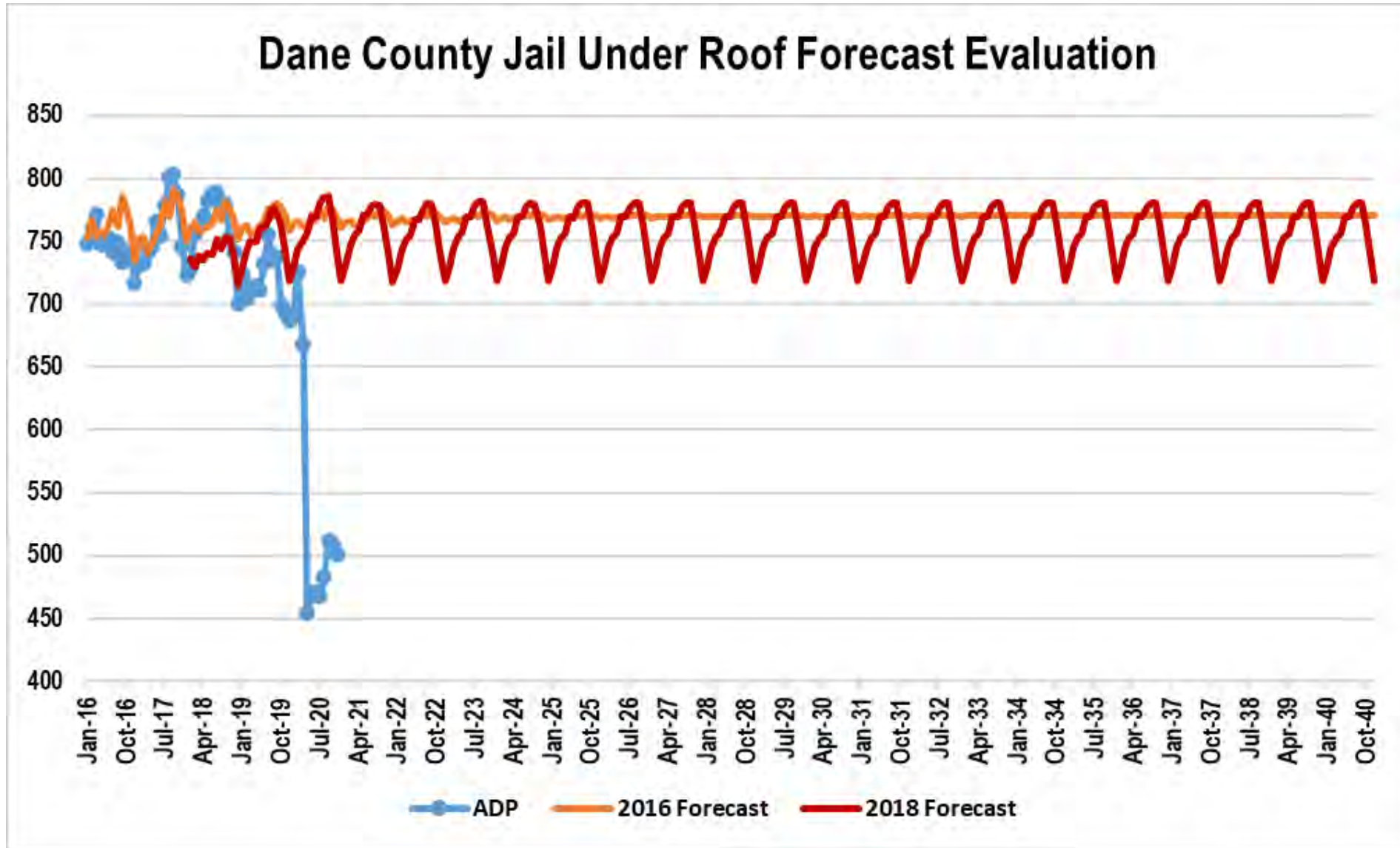
2016 & 2018 Population Forecast Evaluation



What happened?

- Probation/Parole population decreased by 22.5%
- Sentenced With Huber population decreased by 17.6%
- These are generally 2 of the biggest custody segments

2016 & 2018 Population Forecast Evaluation



COVID-19 & Jail Population

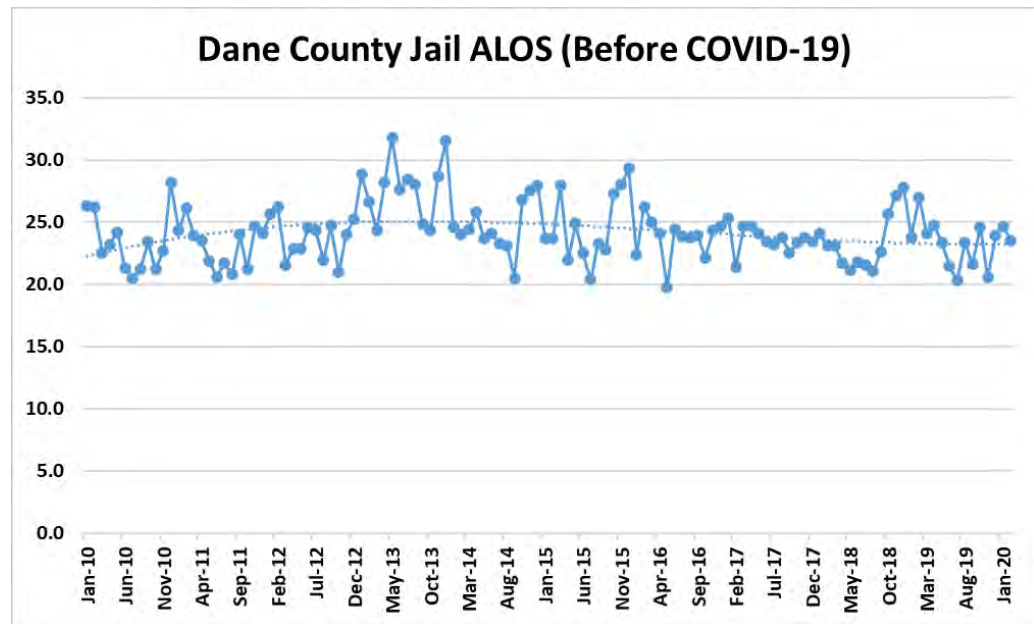
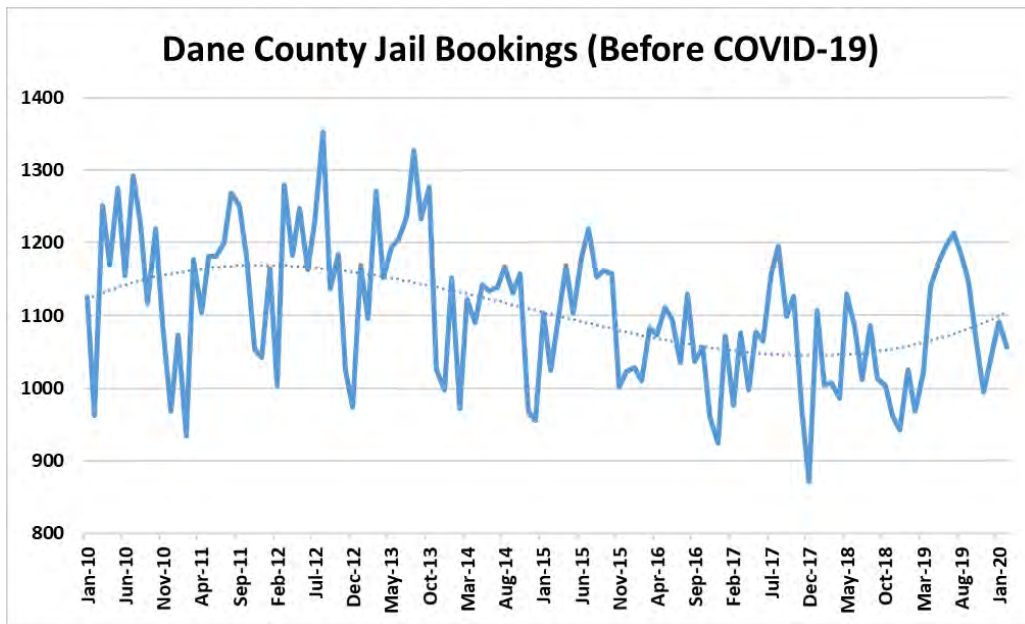
- From end of March until last week, ADP is down 33.1% from same period in 2019
- Bookings into the jail are down 44%
- Mean Average Length of Stay actually increased 5.6% but the median went from 4 days to 3 days
- Criminal Justice System has responded very well to the pandemic with several strategies
- Recognizance/Signature Bond Releases and Bail Releases significantly increased
- Analyzed repeat bookings, comparing the above time period:
 - 2019 = 6,203 people booked with 1,392 being rearrested by November 10th (22.4%)
 - 2020 = 4,688 people booked with 582 being rearrested by November 10th (12.4%)
 - 2 individuals arrested 14 times each this year, both with multiple violent felonies

COVID-19 & Jail Population

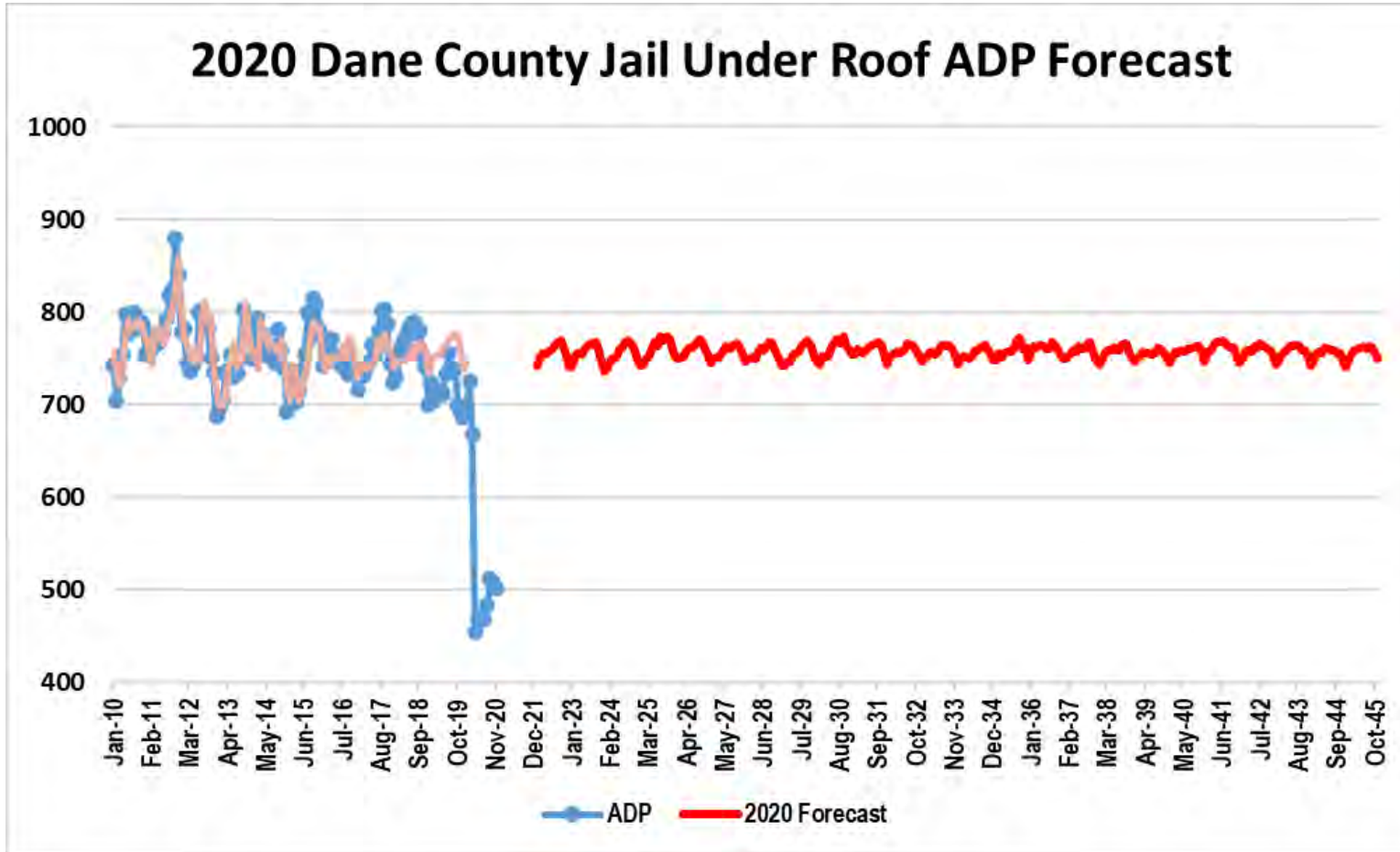
- Analysis of most serious charge of each inmate in the population:
 - Reductions in non-violent and non-sex offense categories
 - Pre-COVID, violent felons comprised 24.5% of the population; post-COVID = 32%
 - Felony Supervision Violations were 14.6% of the population; now = 10.5%
 - DUI was 11%, now = 7.2%
 - Bookings for violent felonies, weapons felonies, felony sex offenses & burglaries have all increased
 - Felony ALOS increased 3.4%; Misdemeanor ALOS decreased 23.4%
- Analysis of case status of each inmate in the population:
 - Probation/Parole down 43%
 - Sentenced With Huber down 54%
 - Pretrial down nearly 20%
 - State Prisoner Intransits are one of the few areas of increase

2020 Population Forecast

- Assumes that the system changes experienced in 2019 are permanent
- Assumes that the pandemic will largely be under control at the start of 2022
- Does not assume that the changes in arrest and detention patterns during the pandemic are permanent
- Forecast is based on bookings, ALOS, and Dane County population growth



2020 Population Forecast



- Forecast is fairly similar to previous forecasts (slightly lower)
- 2045 ADP = 763
- County population growth will drive bookings growth
- Continued efficient system practices keep jail growth stable
- Note the forecast does not detail the post-pandemic population return
- Expect actual ADP to be +/- 5% of this forecast, barring something exceptional happening (like a pandemic)

Translating 2020 Population Forecast Into Beds

- The forecast average daily population of 763 is an *average*
- To determine the number of needed beds in a facility, must factor in 2 key considerations:
 - Jail populations fluctuate by season, day, and hour (peaking factor)
 - To maintain a safe and secure facility, capacity must be available to house certain populations separately from each other (classification factor)
- Our analysis largely confirms the prior peaking and classification factors from prior studies
- The peaking factor is 12.7%
- The classification factor is 6.6%

Translating 2020 Population Forecast Into Beds

Therefore, the bed need is consistent with previous forecast guidance:

Month	Base Projection	With 12.7% Peaking	With 6.6% Classification	Final Bed Need
Jul-25	774	98	51	923
Jul-29	764	97	50	911
Jul-33	765	97	50	912
Jul-37	760	97	50	907
Jul-41	766	97	51	914
Jul-45	763	97	50	910

Conclusions

- The permanency of the system changes due to the pandemic is difficult to assess due to many moving pieces across a wide variety of stakeholders
- Key consideration is the level of risk the community is willing to tolerate
- No clear indication that anything but a return to pre-pandemic practices will occur
- Facility to be designed for 922 bed count

Meeting Agenda

- » Introductions
- » Project Goals
- » Population Forecasts
- » Design Activity
- » Updated Design
- » Space Alternatives
- » Next Steps
- » Questions



Design Activity

- Completed Design Development Phase in May
- Revised Design to Reduce Project Cost from June to October
- Project is within the budget established by the County
- Goal = start Construction Documents in December – June 2021
- Courthouse Electrical Service Vault Relocation Construction started in October

Meeting Agenda

- » Introductions
- » Project Goals
- » Population Forecasts
- » Design Activity
- » Updated Design
- » Space Alternatives
- » Next Steps
- » Questions



View from Wilson Street



South Façade - Side by Side Comparison with 1 Less Floor



Building Elevations



North Elevation – W. Doty Street



West Elevation (East Elevation Similar)

Street View on W. Wilson St.



View from John Nolen Drive

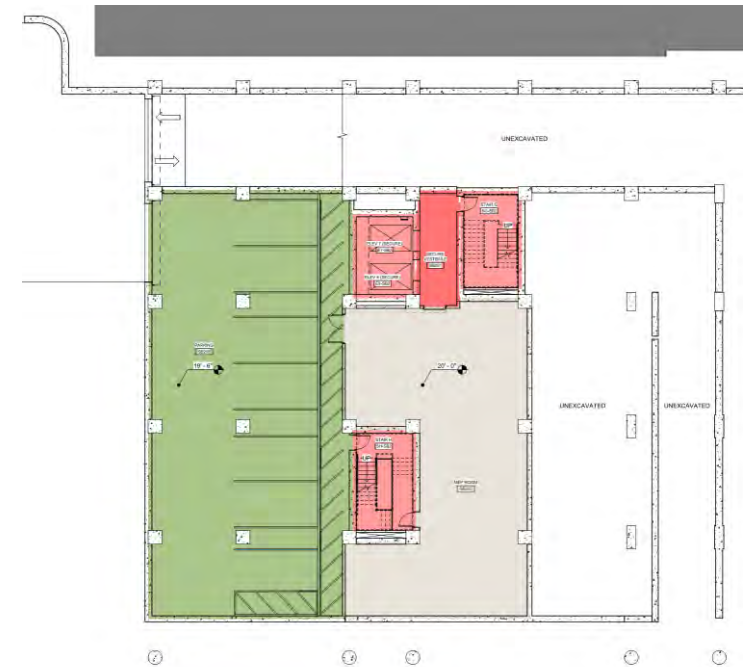


Sub-Basement and Sub-Basement 2 Floor Levels

- Reduced size of sub-basement mechanical level and put loading dock ramp on grade
- PSB renovations bid as add alternates – Secure Inmate Transportation



Sub-Basement



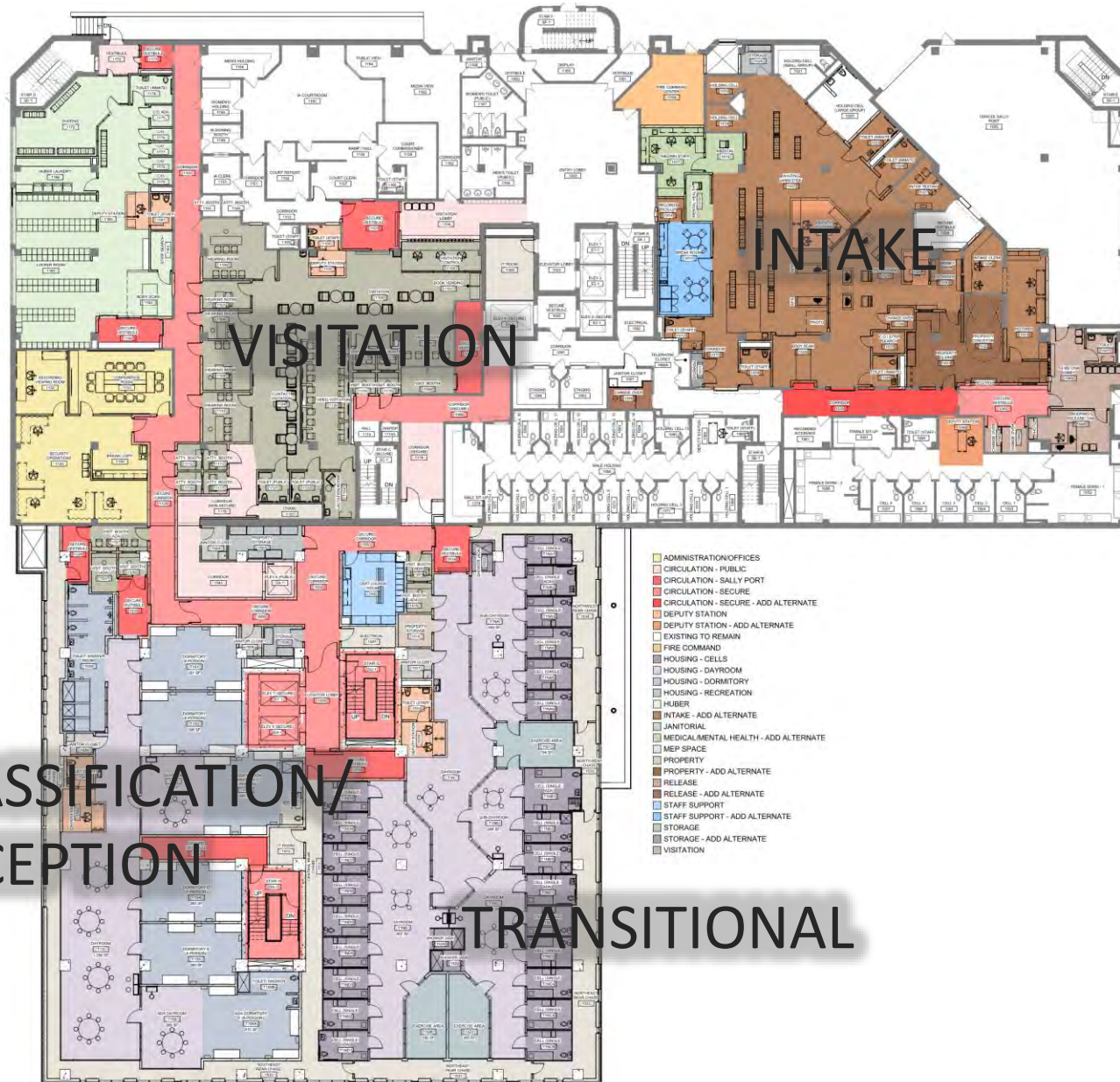
Sub-Basement 2

Basement Floor Level



- No revisions from previous Design Development plans
- PSB renovations bid as Add Alternates – Intake/Booking & Inmate Property Storage/Jail Storage

First Floor Level

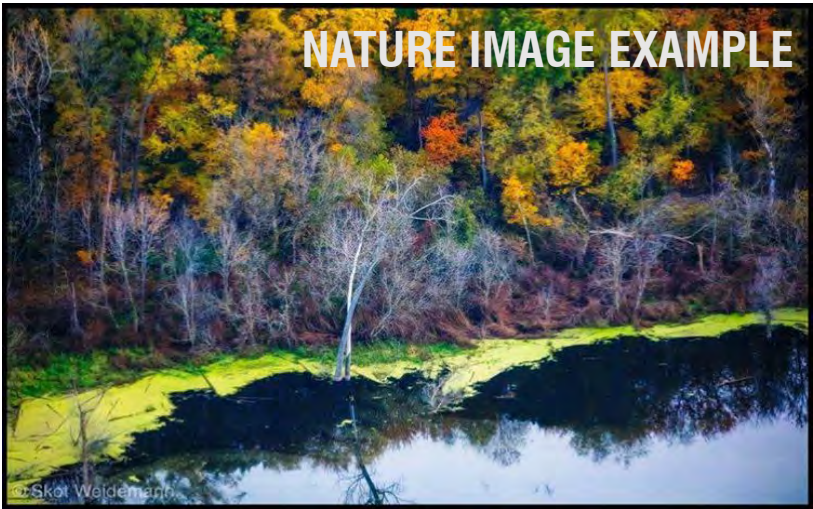


- No revisions from previous Design Development drawings
- PSB renovations bid as Add Alternates – Intake/Booking

CLASSIFICATION/
RECEPTION

TRANSITIONAL

Visitation Finishes



WALL PANEL

VINYL PLANK FLOOR

CARPET

LOBBY TILE



WOOD EFFECT CEILING PLANK

PAINT

Visitation



Visitation



Visitation



Mead & Hunt

HDR

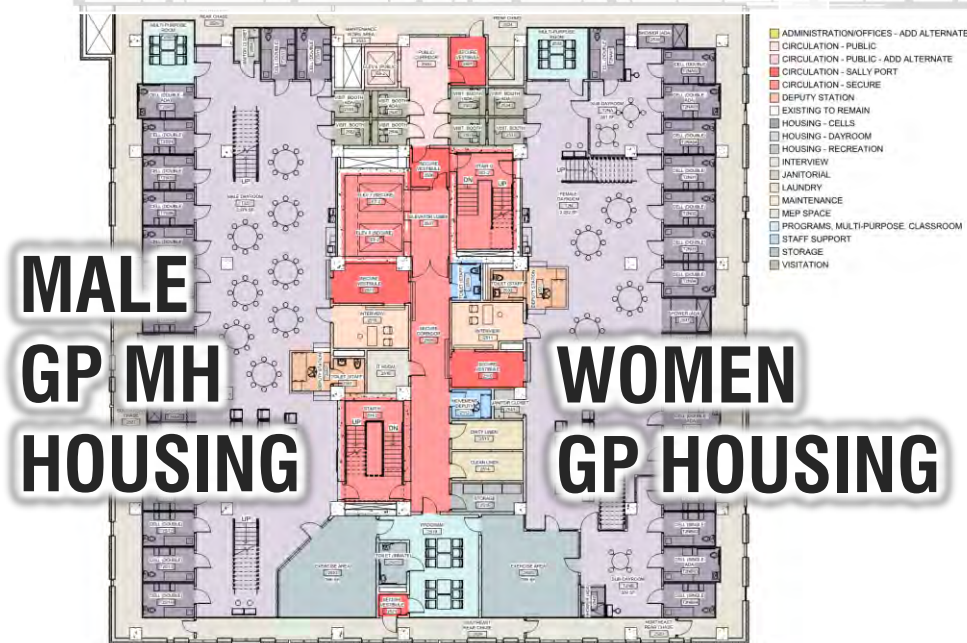
Potter
Lawson

Success by Design

Second Floor Level

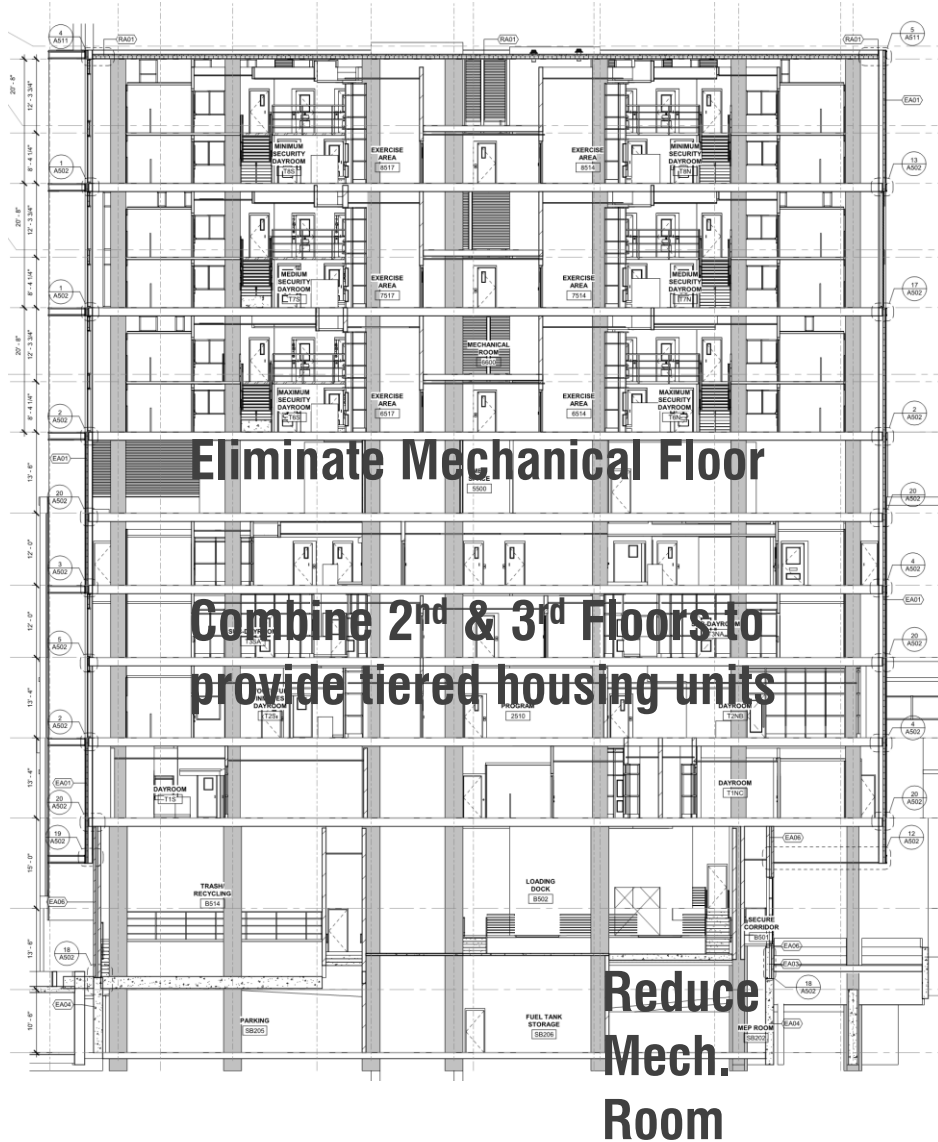


- Combined Second and Third Floors to provide Tiered Housing
- Located Youthful Inmate Housing to existing PSB Third Floor
- PSB renovations bid as Add Alternates – Jail Administration and Jail Diversion Offices



Building Section Comparison

Original Building Section



Revised Building Section



Typical Tiered Housing Dayroom



Linear vs Direct Supervision

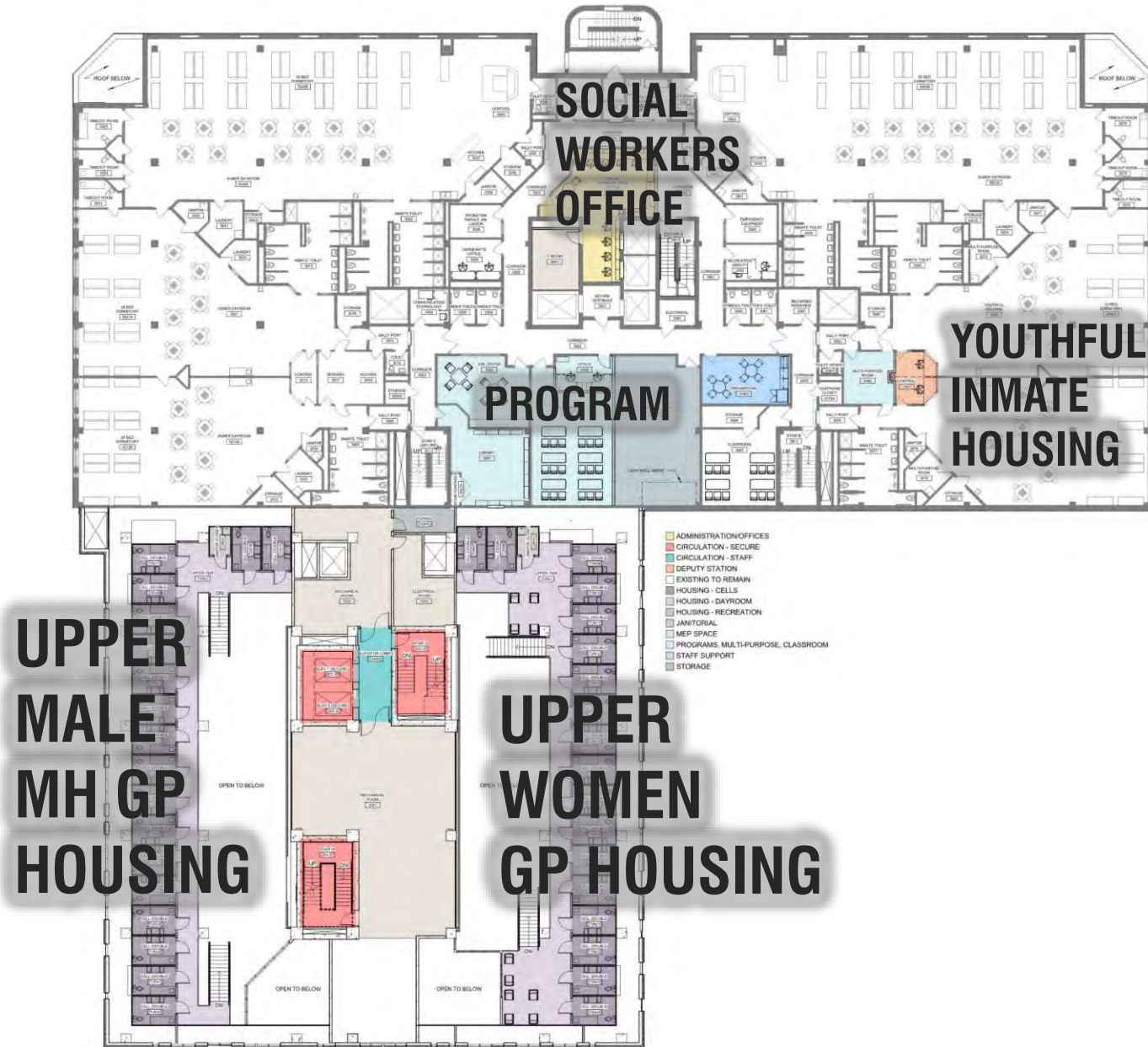


Existing Linear in CCB



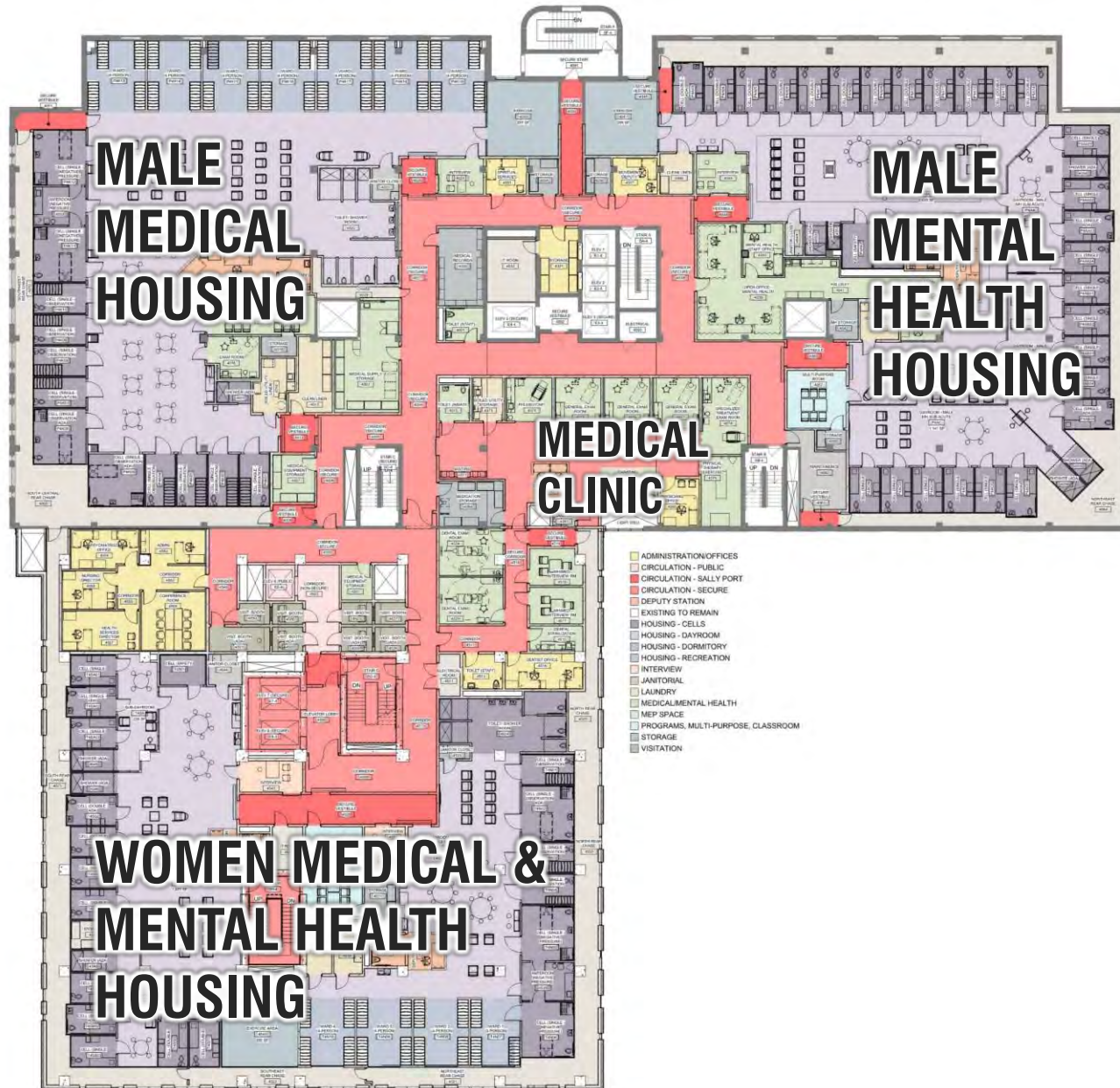
Proposed Direct Supervision

Third Floor Level



- Combined Second and Third Floors to provide Tiered Housing
- Located Youthful Inmate Housing to existing PSB Third Floor
- PSB renovations bid as Add Alternates – Social Workers Offices

Fourth Floor Level



- No revisions from previous Design Development plans
- 20% of the beds dedicated to Medical and Mental Health
 - Medical Beds - 61
 - Mental Health Beds - 121

Medical Housing Dayroom



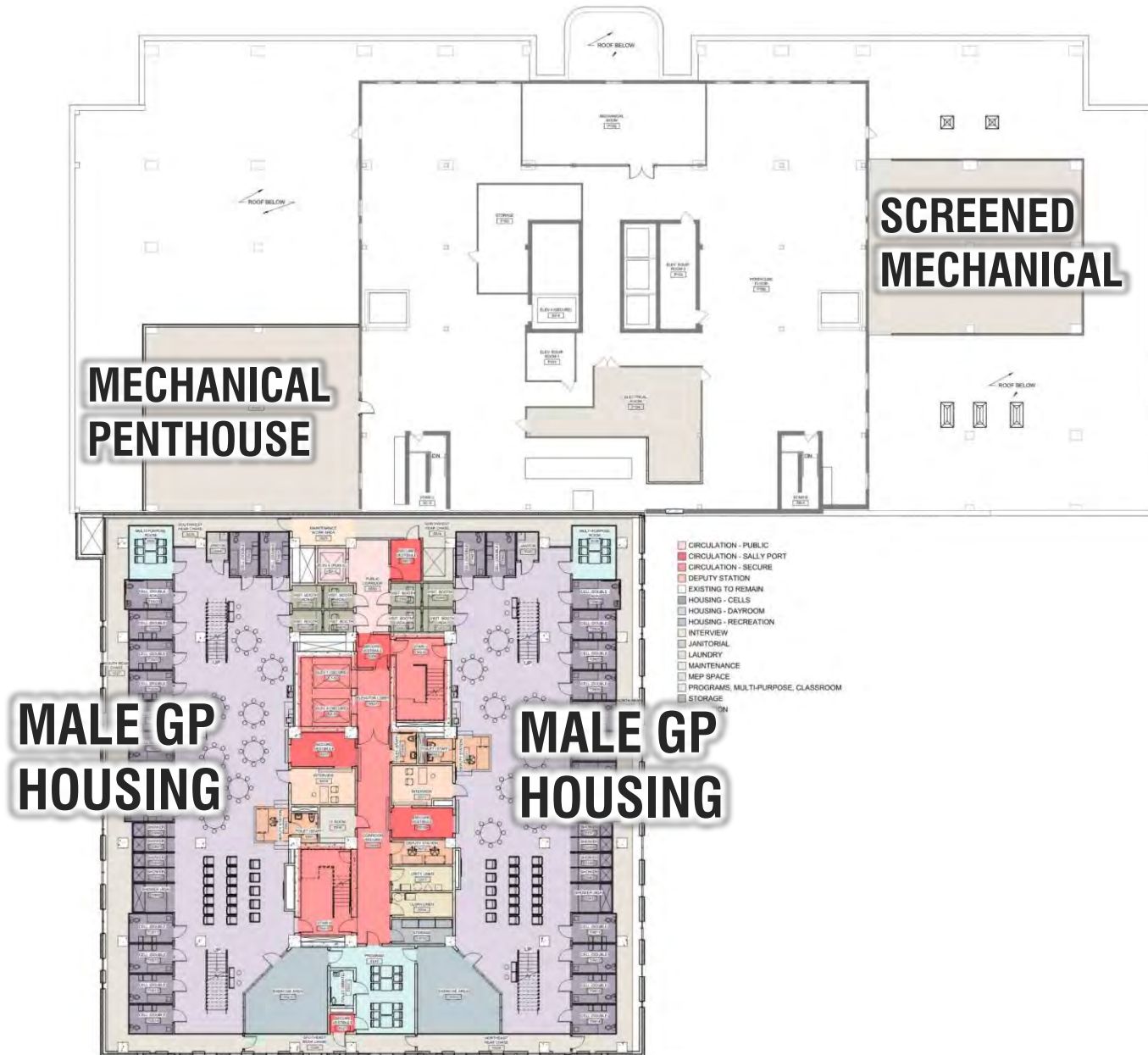
Mental Health Housing Dayroom



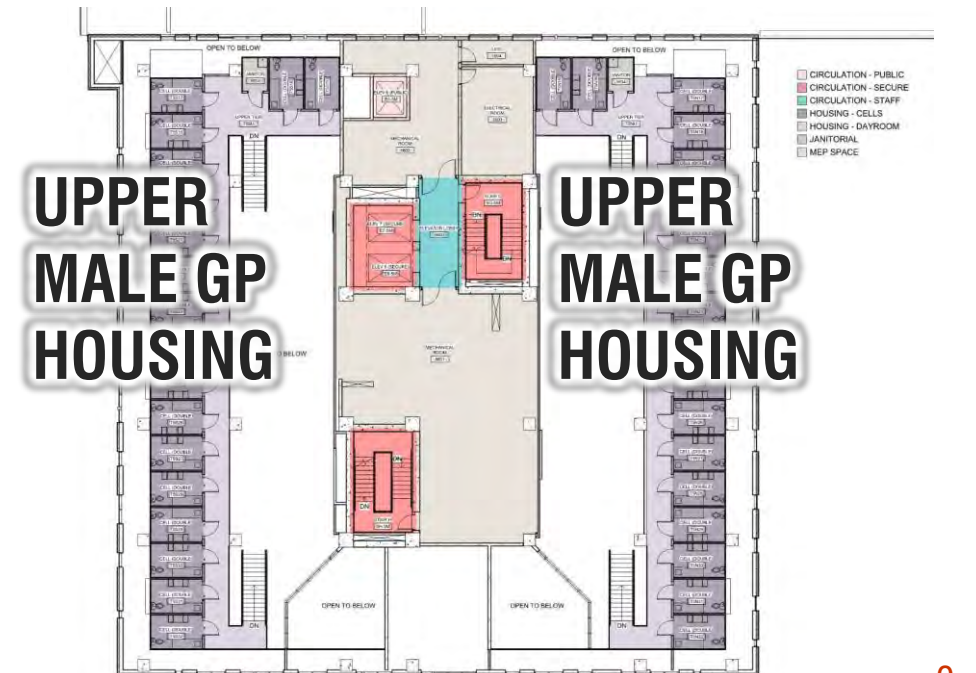
4th Floor Male Acute Medical Virtual Walk Through



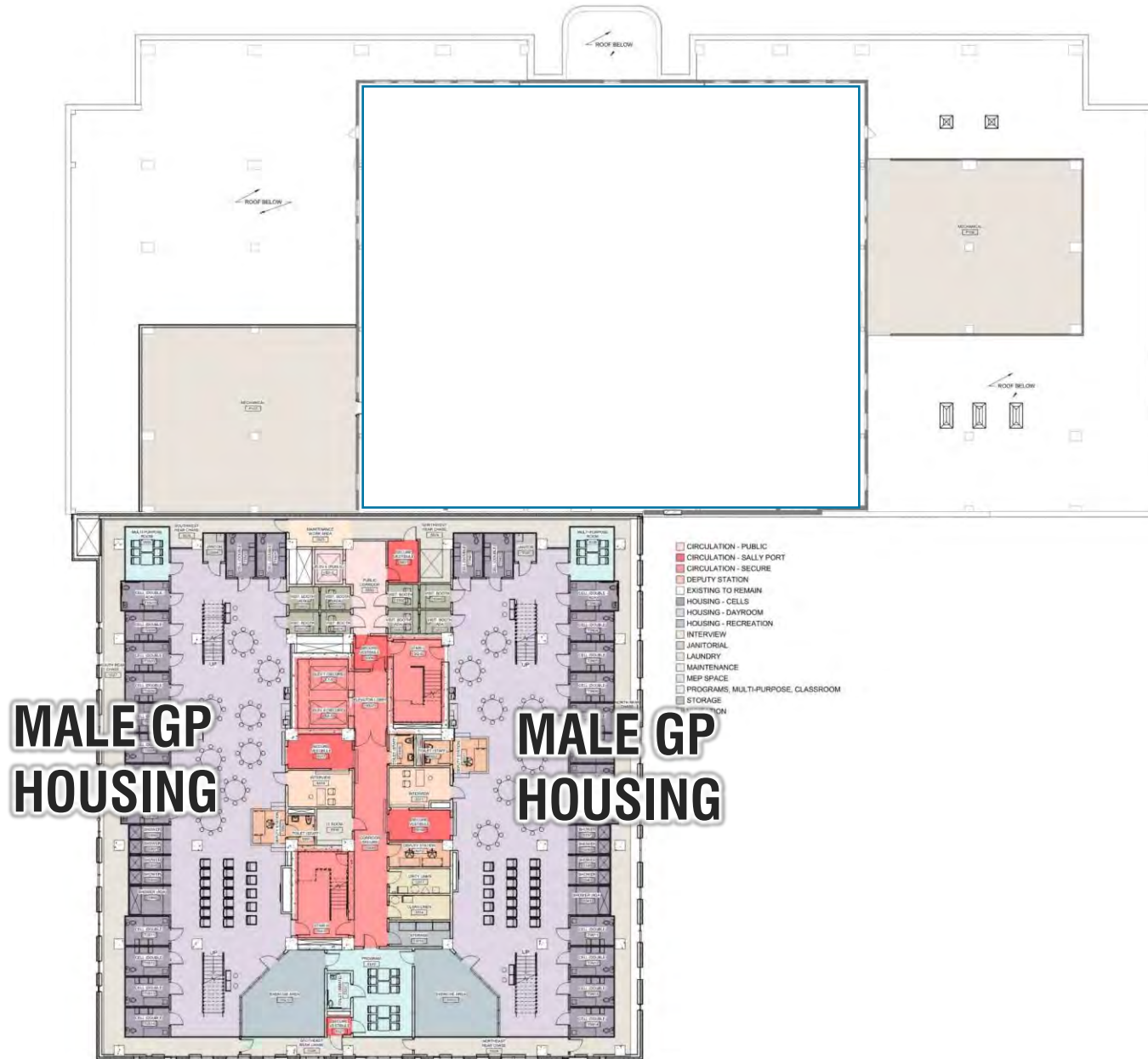
Fifth Floor and Fifth Mechanical Floor Level



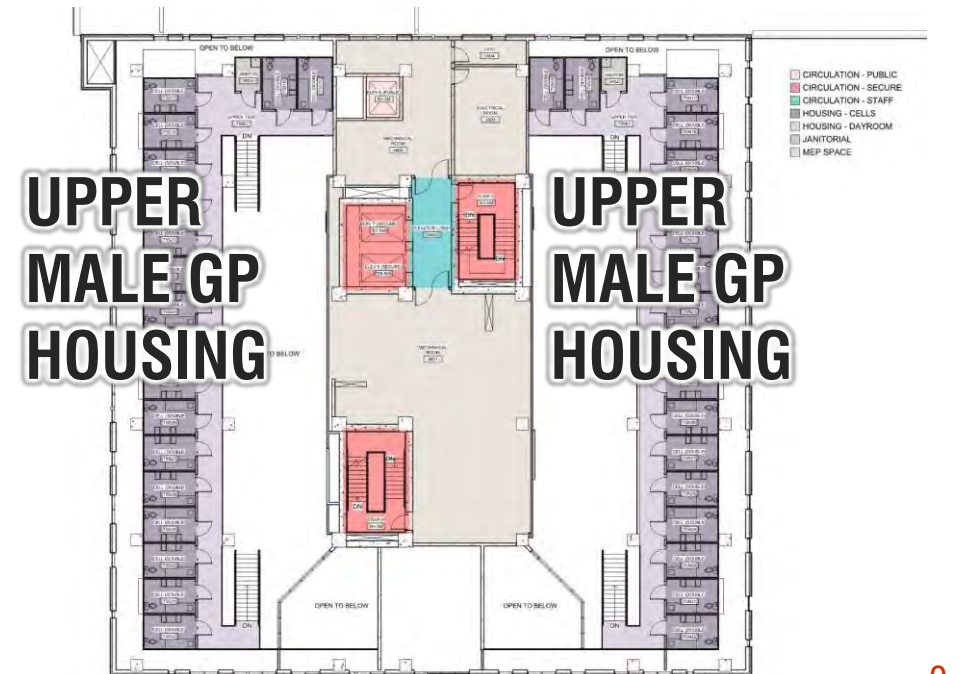
- Relocated Fifth Floor Mechanical Room and Dispersed Mechanical Areas Throughout Building
- Moved Sixth Floor Housing to Fifth Floor



Sixth Floor & Sixth Mechanical Floor Level

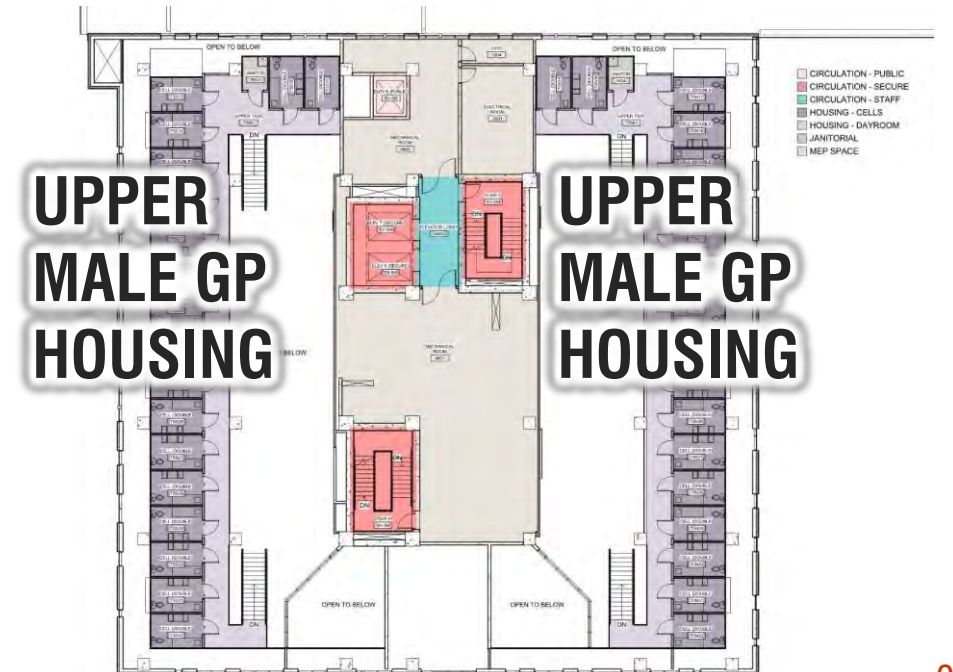
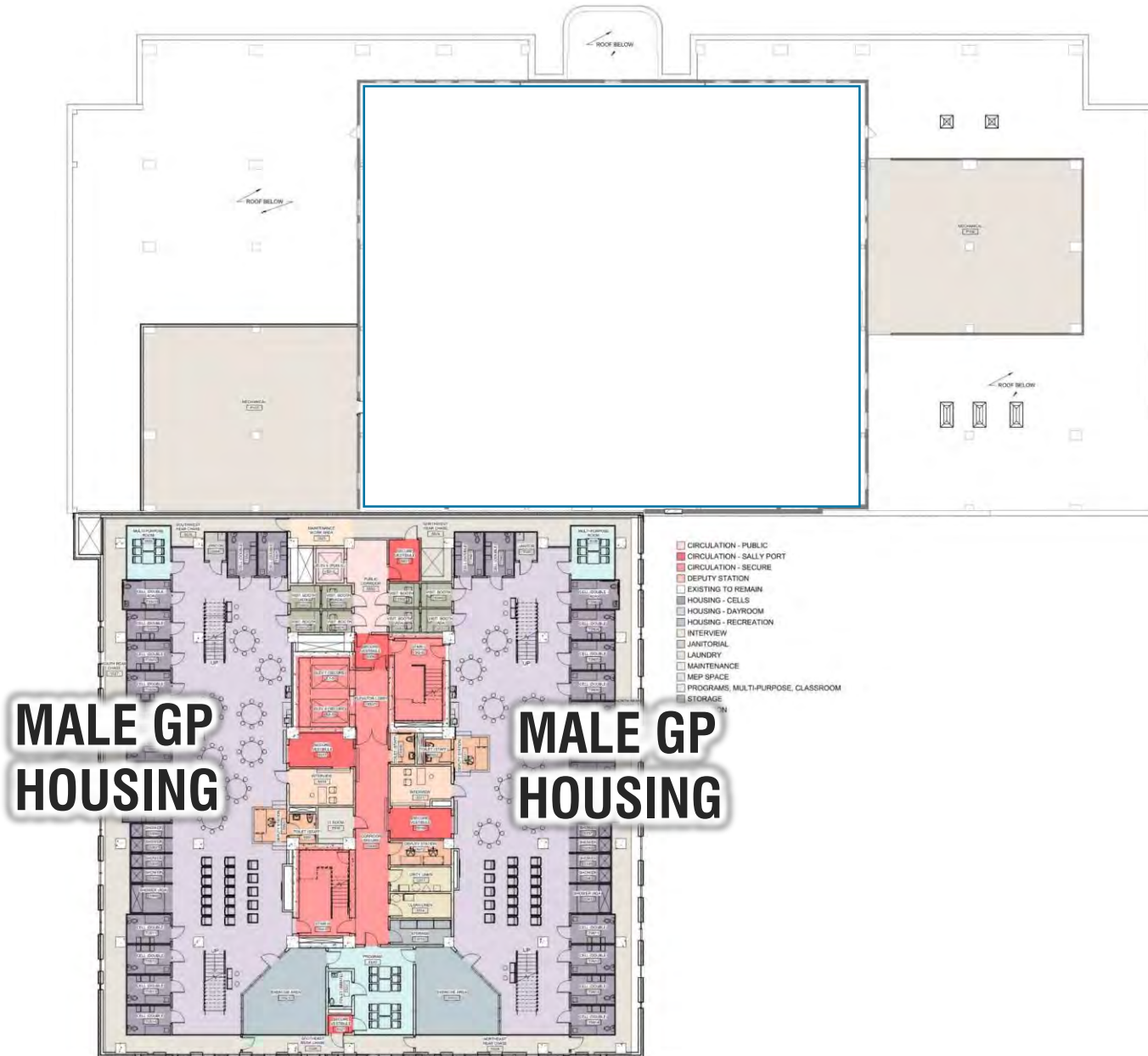


- Moved Seventh Floor Housing to Sixth Floor



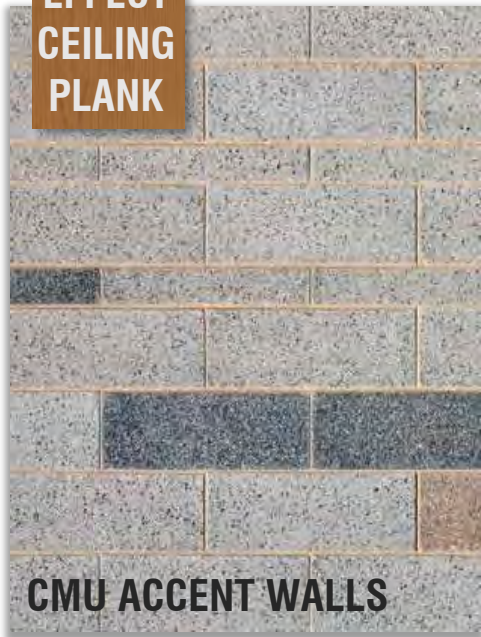
Seventh Floor & Seventh Mechanical Floor Level

- Moved Eighth Floor Housing to Seventh Floor

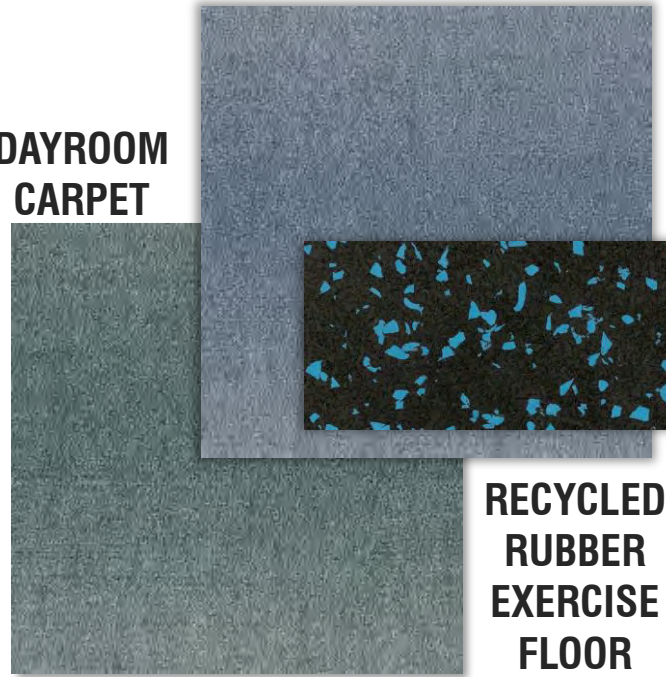


Housing Unit Finishes

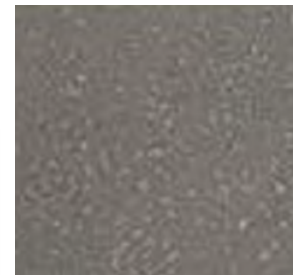
**WOOD
EFFECT
CEILING
PLANK**



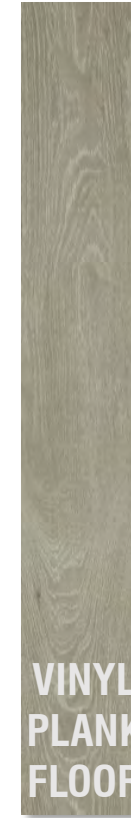
**DAYROOM
CARPET**



**COLORED
CONCRETE**



**VINYL
PLANK
FLOOR**



**VINYL SHEET
FLOOR**



PAINT



Housing Dayroom



Housing Dayroom



Meeting Agenda

- » Introductions
- » Project Goals
- » Population Forecasts
- » Design Activity
- » Updated Design
- » Space Alternatives
- » Next Steps
- » Questions



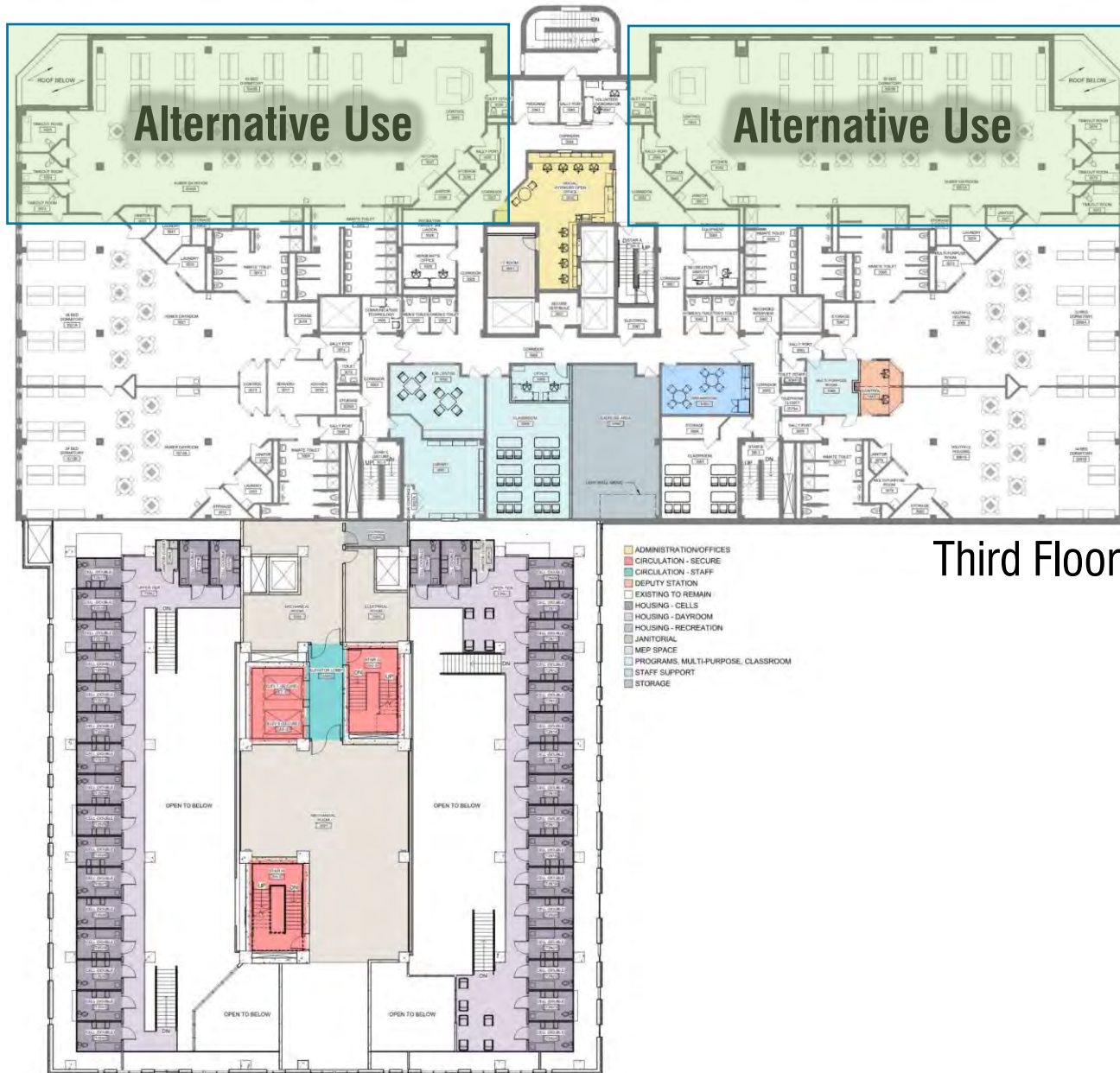
Space Alternatives - Inmate Population Decline

Design Options for Converting Housing Pods 3A and 3K (approximately 5,000 SF each) for different functions:

- Program Space
- Community / Industry Training
- Medication Assisted Treatment (MAT)



Space Alternatives



- Location of Housing Units 3A and 3K for Alternative Use Space

Program Space Options

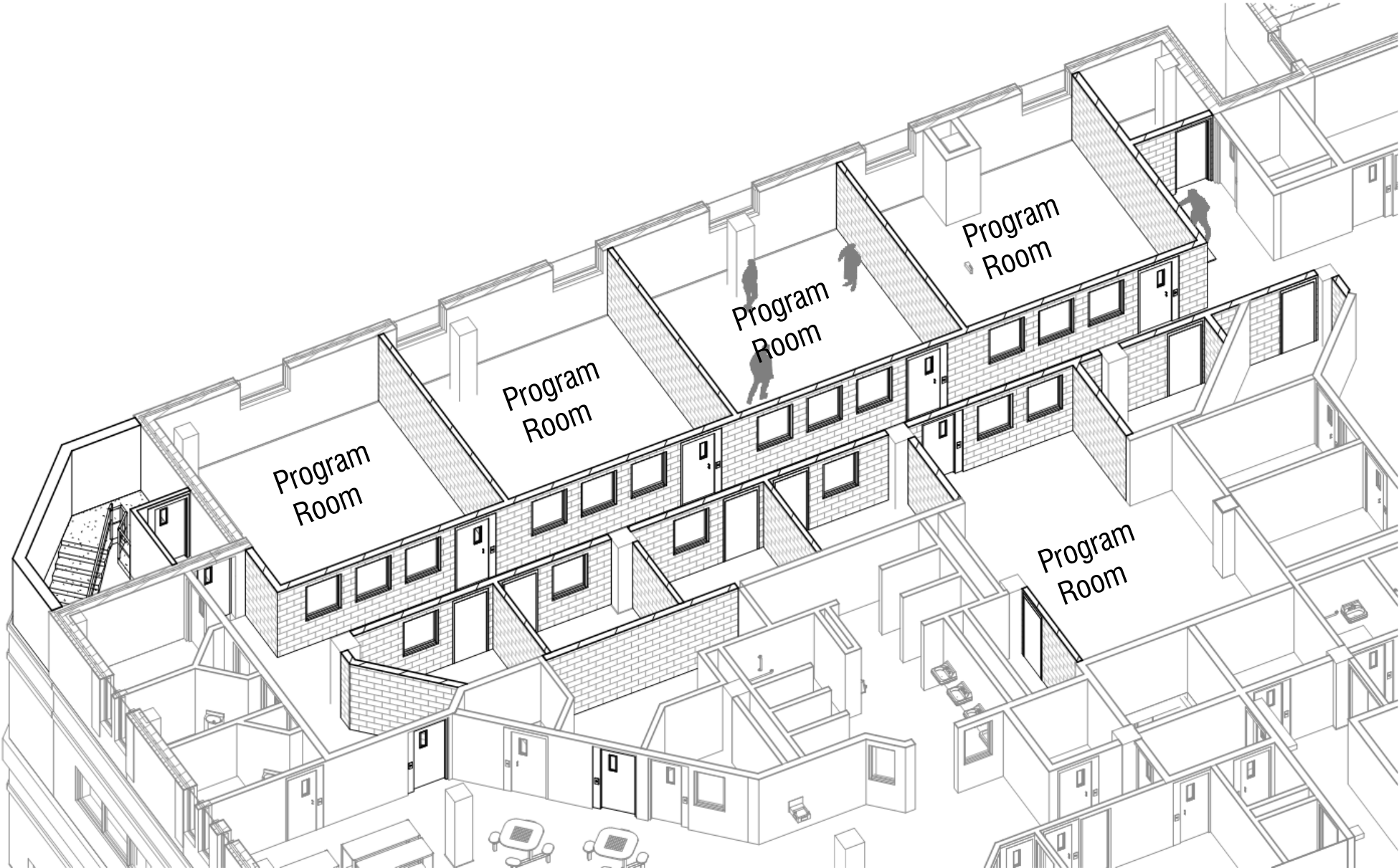
- Education / Computer Science
- Literacy
- Yoga / Health and Wellness
- Art / Music



Focus on Education / Positive Experiences

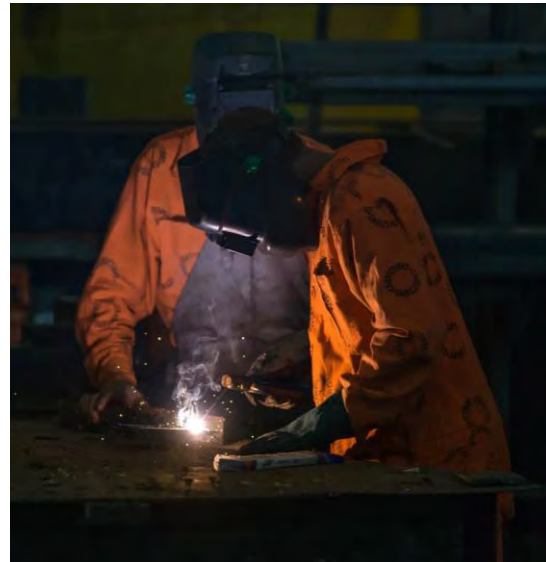


Space Alternatives – Program Space

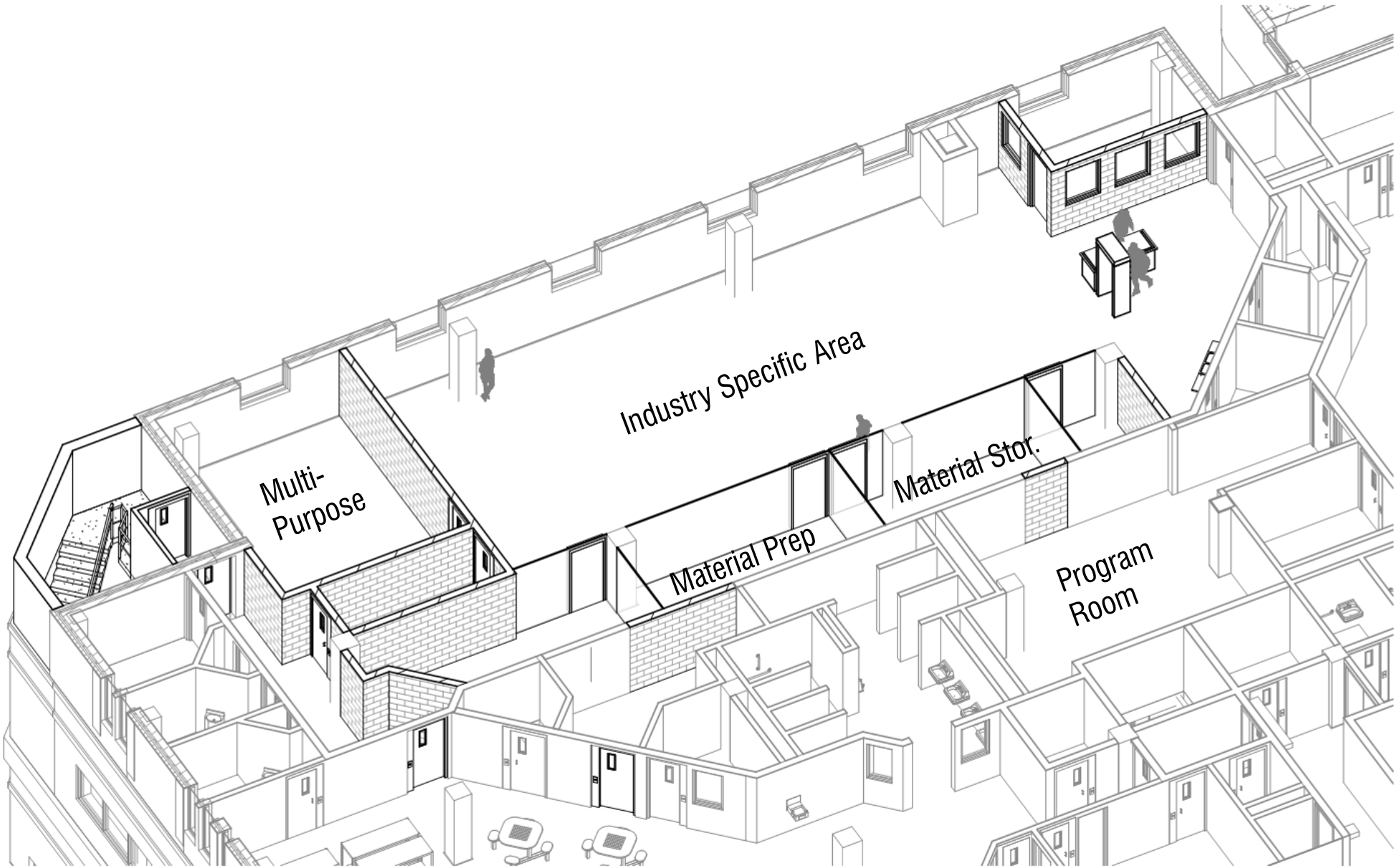


Potential Community / Industry Options

- Vocational Education
- Urban Farming
- Food Service
- Laundry

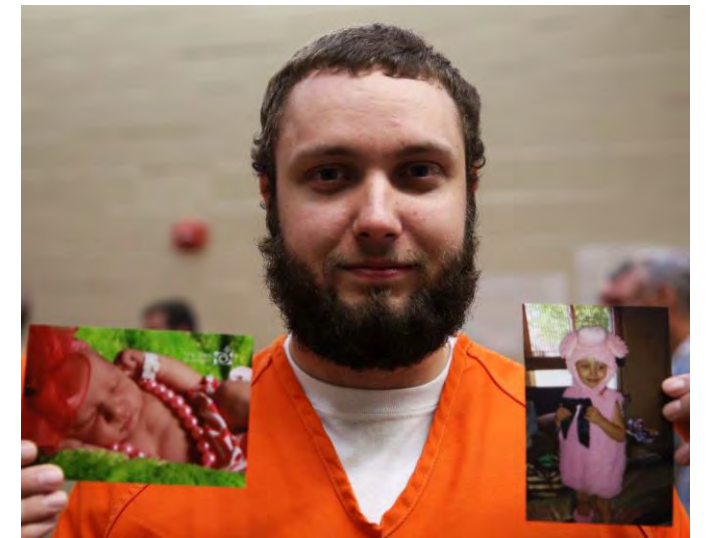


Potential Community / Industry Program Space

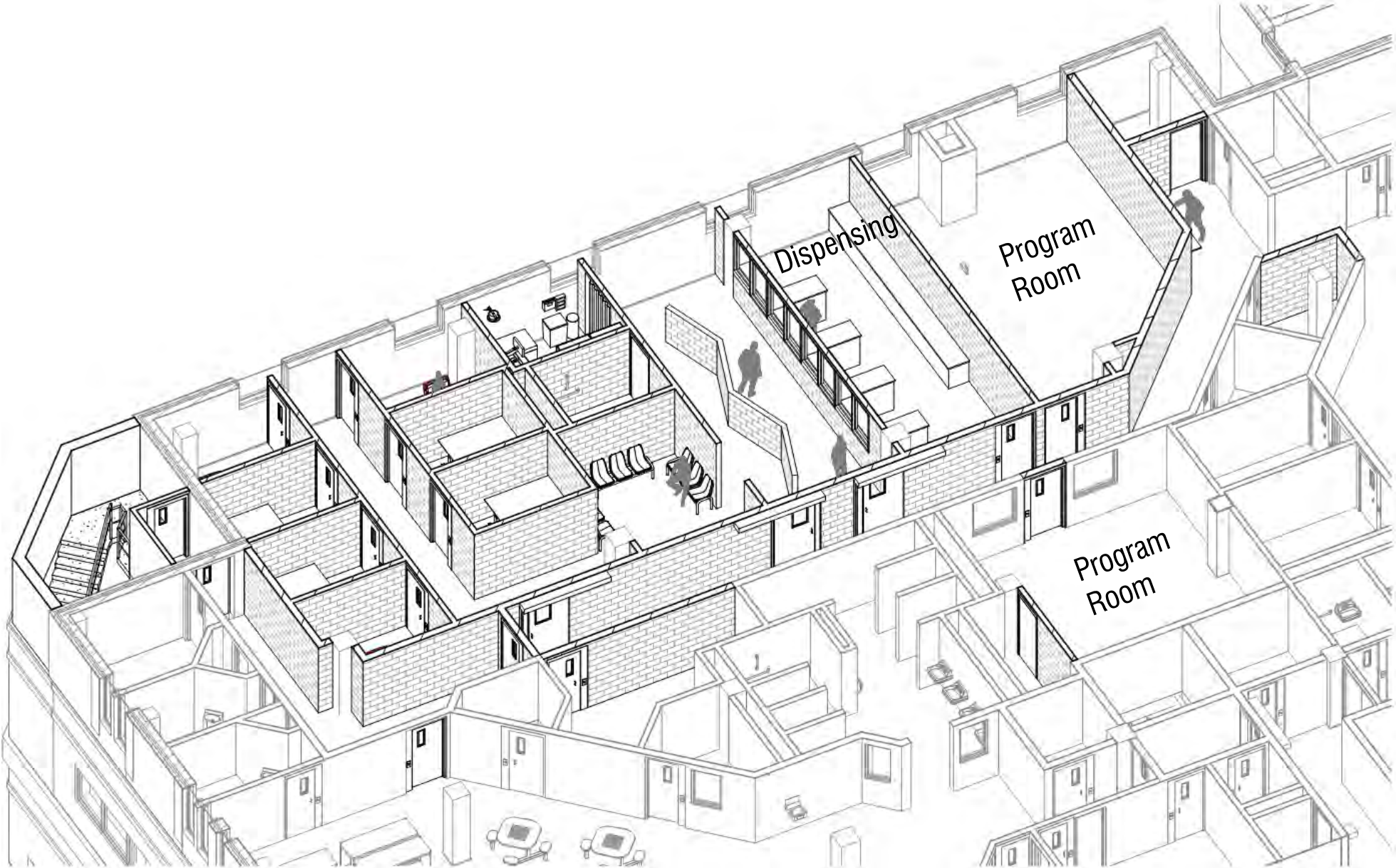


Medication-Assisted Treatment Program (MAT)

- Medication, in combination with counselling and behavioral therapies provide “*whole patient*” *treatment*
- For people struggling with addiction, MAT can help sustain recovery
 - Medication helps normalize brain chemistry, block effects of alcohol and opioids, and relieves physiological cravings.
 - Ultimate goal of MAT – full recovery including the ability to live a self-directed life.



Medication Assisted Treatment (MAT)



Meeting Agenda

- » Introductions
- » Project Goals
- » Population Forecasts
- » Design Activity
- » Updated Design
- » Space Alternatives
- » Next Steps
- » Questions



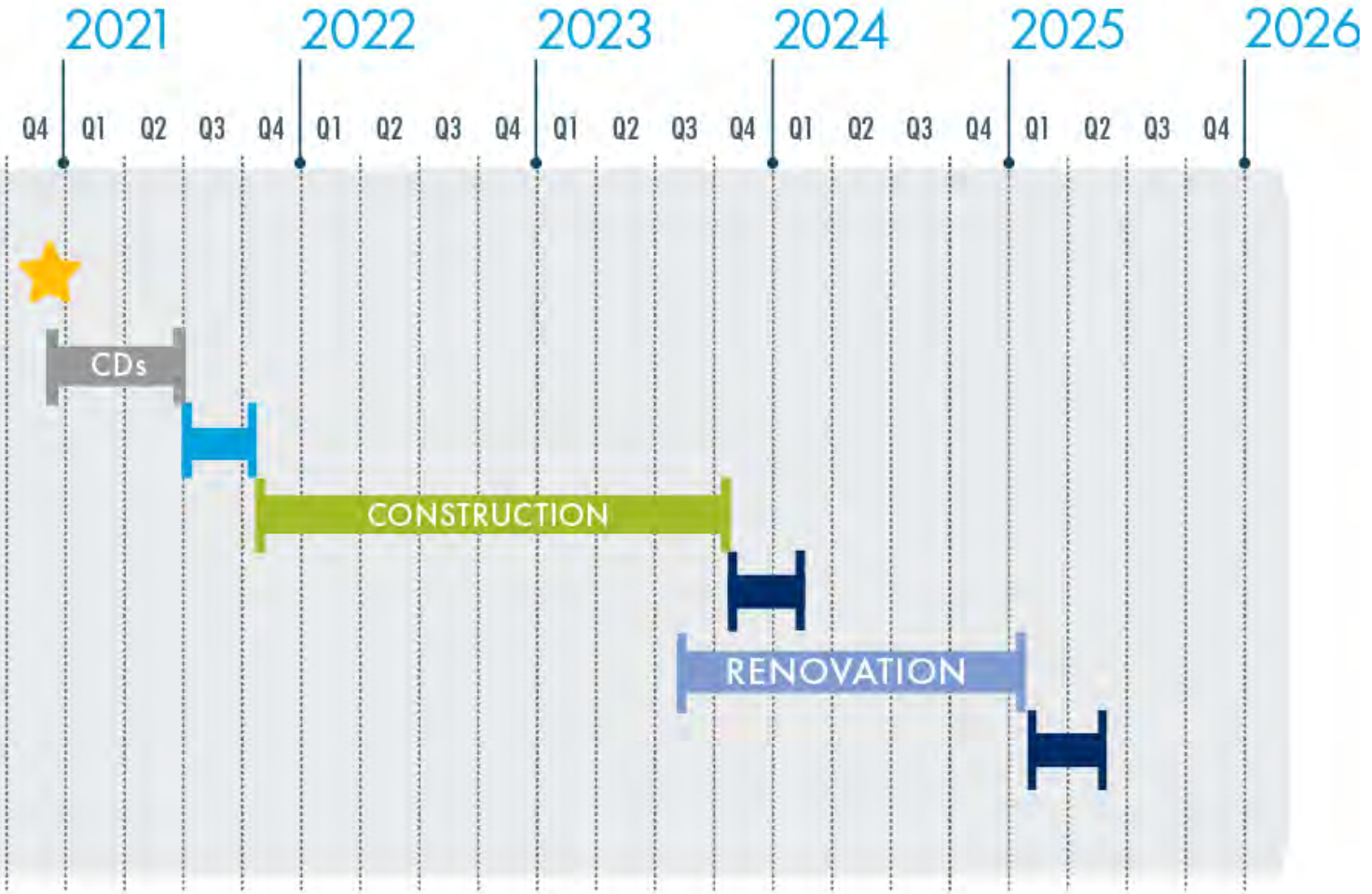
Next Design Steps 2020 - 2021

November	<i>County Notice to Proceed to Start CD's</i>
Dec to June	<i>Complete Construction Documents for Bidding & Complete City Approval Process</i>
July to Oct	<i>Contractor Bid & Award Jail Consolidation Project</i>
3Q 2021	<i>Complete Construction/Relocation of Courthouse Site Electrical Service Vault</i>
November	<i>Start South Tower Construction</i>

Updated Project Schedule

SOUTH TOWER ADDITION

- County NTP into CDs
- Construction Documents (CDs)
- Bid & Award South Tower Addition & Reno
- Construction of South Tower Addition
- Relocate Inmates Out of PSB (DCSO)
- Renovation of PSB
- Relocate Inmates/Vacate CCB & Ferris (DCSO)



For more information...

<https://danesheriff.com/documents/pdf/DCJ-Consolidation---Project-Objectives-Summary.pdf>



Divisions Resources Crime Tips Events Links Contact

DANE COUNTY SHERIFF'S OFFICE

2019 Sheriff's Office Annual Award Recipients.

Coronavirus (COVID-19) Notice

- Information about Dane County's COVID-19 Response.
- Social distancing and minimizing travel can have a major impact in delaying the epidemic. Dane County is encouraging people to conduct business with County Departments via phone and email where possible. Using prevention, we can slow the spread of the disease and protect the most vulnerable.
- Please monitor Public Health Madison & Dane County's website (<https://publichealthmdc.com/coronavirus>) for more information.
- Dane County is following Public Health Madison & Dane County's Forward Dane plan. We are in Phase 2. Read the Public Health Order.
- If you think you have been exposed to COVID-19 and develop a fever and symptoms, such as cough or difficulty breathing, call your healthcare provider for medical advice.

News & Noteworthy

- Dane County Jail Consolidation Project Objectives Summary
- Jail Review Committee Presentation 05.19.20
- Jail Review Committee Exterior Design Presentation 11.19.19
- Community Crime Map
- Records Request
- Contact a Recruiter
- Option 3 - Dane County Jail Study
- Alternative Jail Design Report, April 2019
- Emergency Preparedness Training
- Dane County Jail Study
- VINE Link
- Wisconsin VINE Protective Order
- CARD Project
- Care Trak
- Citizen Academy
- Alarm Registrations
- Hiring Supplemental Deputies
- Inmate Listing
- Warrant Search
- Current Inmate Population Demographics
- #8CantWait
- Download the DCSO Sheriff App Here

WELCOME TO THE DANE COUNTY SHERIFF'S OFFICE WEBSITE

DANE COUNTY SHERIFF
DAVID J. MAHONEY

On behalf of myself and the almost 600 dedicated men and women of the Dane County Sheriff's Office, I would like to welcome you to our official website.

The Sheriff's Office is the largest law enforcement organization in Dane County, and the fourth largest in the State of Wisconsin. We continue to make strides toward becoming the most professional, efficient, and cost effective agency employing progressive solutions to the ever-changing challenges facing our communities.

Madison is the county seat and Wisconsin's vibrant Capital City. It is home to the University of Wisconsin, Madison Area Technical College, and Edgewood College. As well, Dane County is renowned for its beautiful scenery, boasting a total of five area lakes and over 200 parks providing an abundance of year-round outdoor activities.

TWITTER

Dane County's Goal

Provide a safe, secure and humane environment for those committed to custody thru fair treatment, respect, and dignity.

“The goal of the jail is to return people to the community after their incarceration in a better condition than when they came to the jail”.

-Dane County Sheriff Dave Mahoney

Questions?



One Consolidated Facility Replace outdated cell blocks in CCB, provide a downtown location, replace the Ferris Center, Improve staffing efficiency and reduce operational costs	✓
Appropriate medical/mental health	✓
Visitation at the housing units	✓
More Programming / Multi-purpose space	✓
Minimize impact during construction	✓
Reduce solitary confinement	✓
Reduce total number of beds	✓

Thank you.

