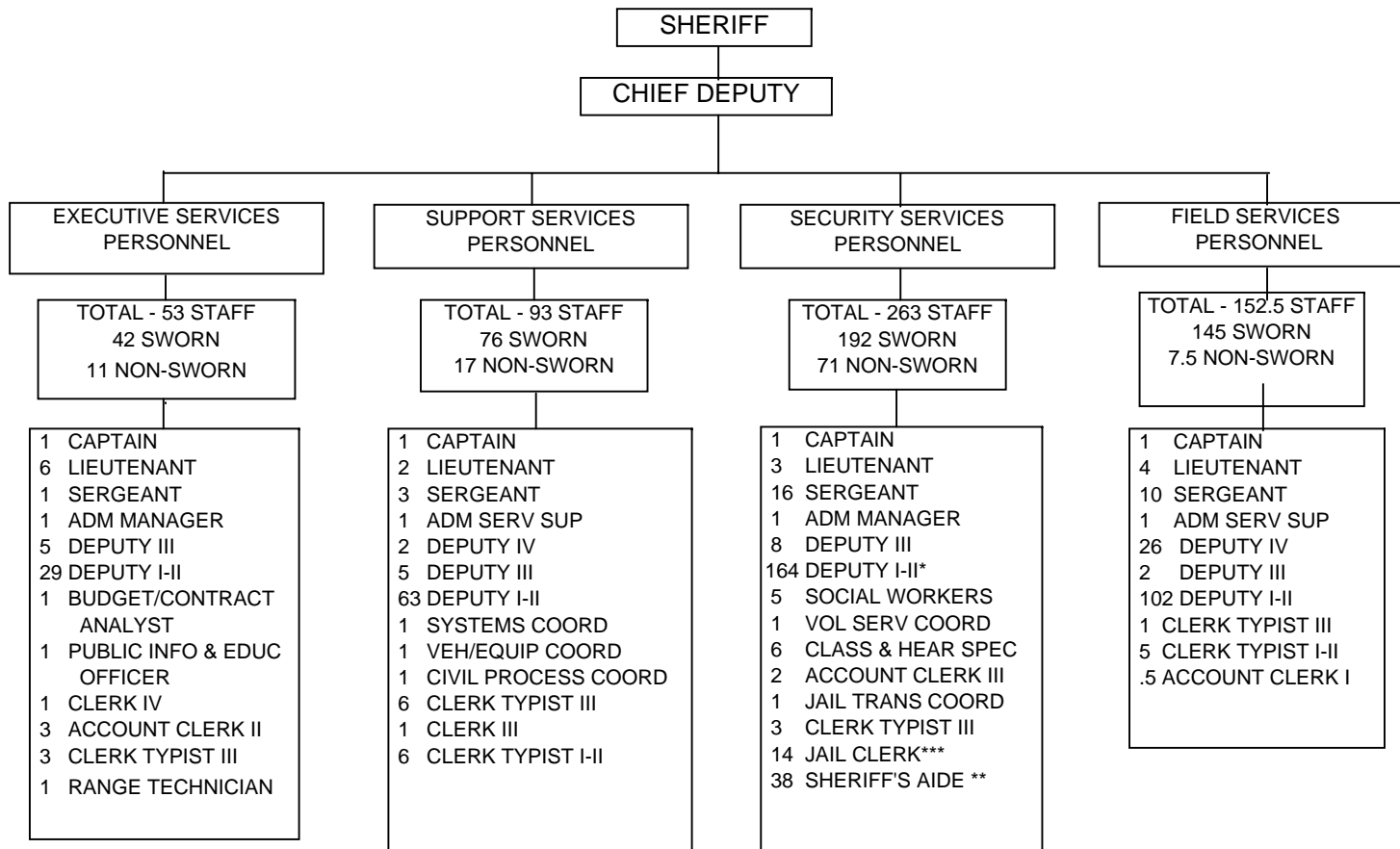


PERSONNEL ORGANIZATION CHART

EFFECTIVE JULY 6, 2008



Authorized:	Sworn
Supervisory	51
Non-Supervisory	<u>406</u>
Total	457

Authorized:	Non Sworn
Supervisory	4
Non-Supervisory	<u>102.5</u>
Total	106.5

TOTAL	
Supervisory	55
Non-Supervisory	<u>508.5</u>
Total	563.5

* Includes 11 Deputy Sheriff I-II Pre-Hires

** Includes 1 Sheriff Aide Pre-Hire

***Includes 1 Jail Clerk Pre-Hire